

Geomatica 10.2 Stand Alone Installation Procedures



TUTORIAL

The purpose of this tutorial is to provide you with a friendly and easy to follow step-by-step guide for the stand alone installation of PCI Geomatica 10.2.

BEFORE YOU BEGIN:

To complete the installation, you will require the following:

- 1 Geomatica 10.2 CD-ROM
- 1 USB or parallel port dongle

STEP 1

Attach the dongle shipped with your package to your computer.

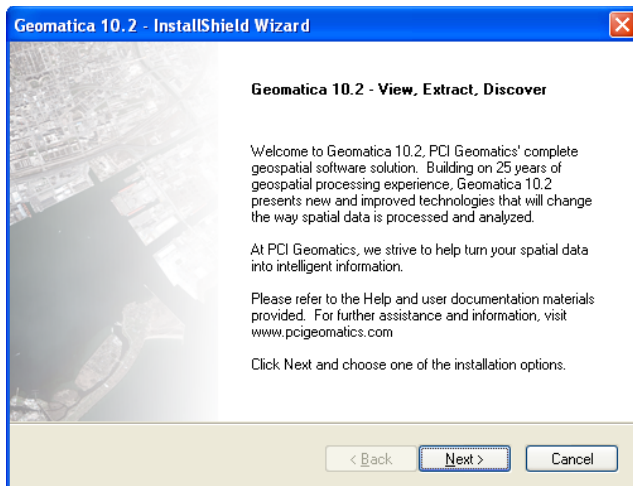
If you have a USB dongle, Windows should detect the dongle and you may get a popup window that asks you to install the Sentinel Protection Service and associated drivers. If this window appears, please follow the installation steps and **be sure to accept the firewall changes in the last installation window**

*****Note – selecting next without reading each window carefully may result in not accepting the firewall changes and the dongle software will not install successfully*****

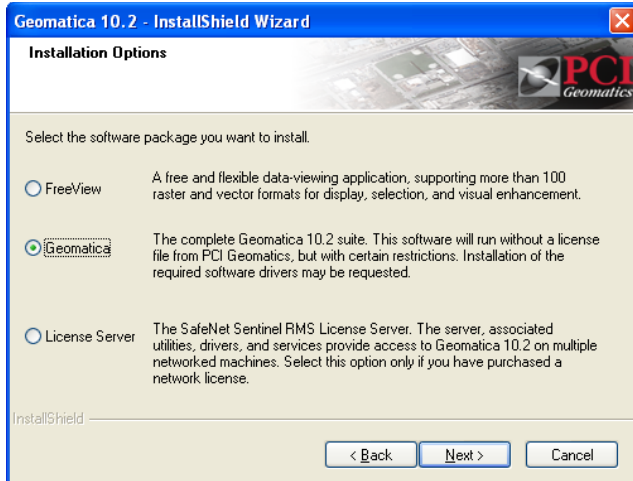
If no popup window appears, it likely means your system is already configured properly

STEP 2

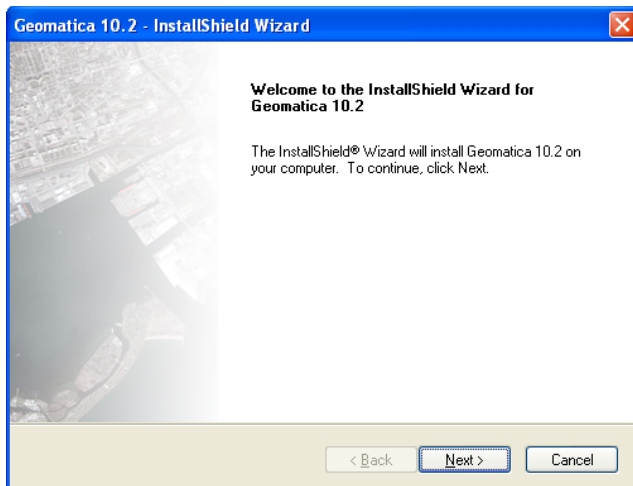
Insert the Geomatica 10.2 installation disk into your CD-ROM. Upon insertion of the disk, the setup should launch automatically. If this does not occur, please navigate to your CD-ROM drive using Windows Explorer and double-click setup.exe. The following window appears:



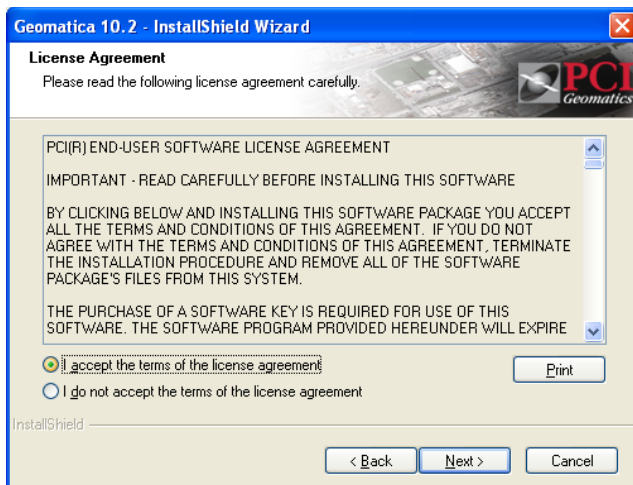
The Geomatica 10.2 Installation Wizard starts. Click 'Next' to proceed.



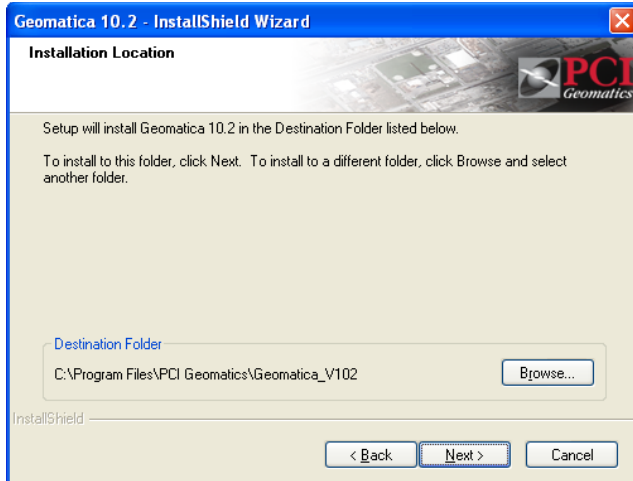
You are now presented with various installation types. Please select 'Geomatica' and click 'Next' to proceed.



The Geomatica 10.2 installation wizard appears. Click 'Next' to proceed.

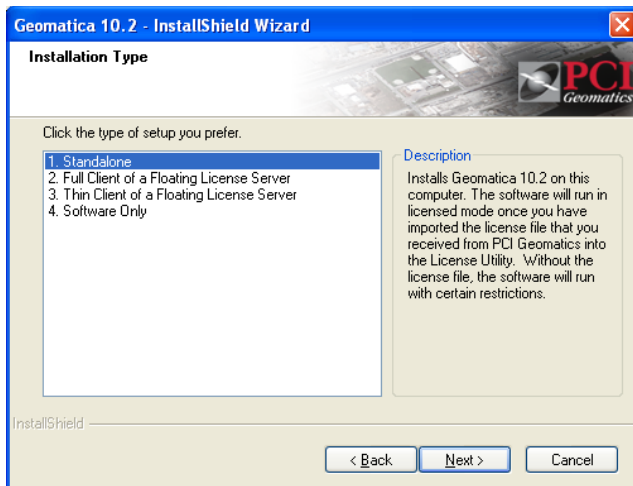


The License Agreement screen appears. Read through the agreement and click "I accept the terms of the license agreement" and then click 'Next'.



The Installation Location screen appears. Choose a destination folder to install the software, then click 'Next'.

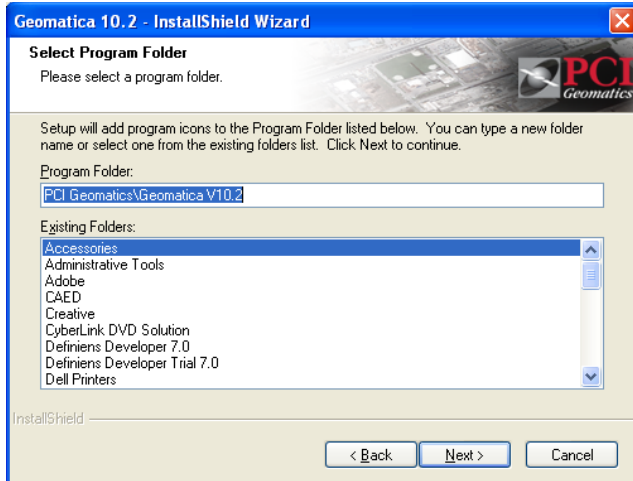
*****Note: Due to lack of full read/write permissions in the "Program Files" directory on Windows Vista, the default destination folder on this platform will be changed to "C:\". Geomatica V10.2 will not run properly if it is installed in the "Program Files" directory on Vista.**



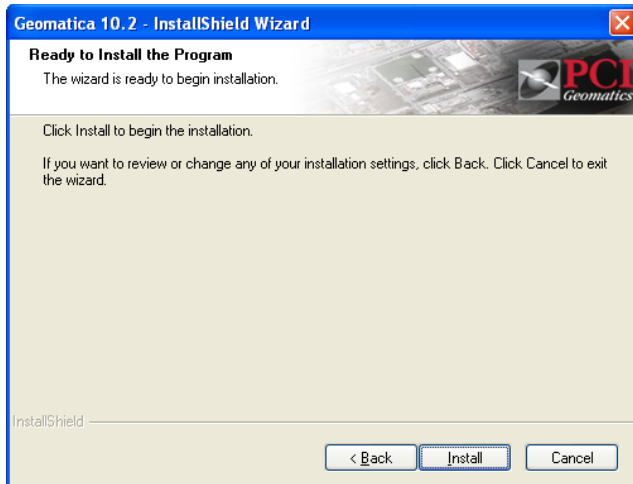
For Standalone Installation, choose Standalone as the Installation Type, and click 'Next'.



The hardlock selection window will now appear. Please select which type of dongle you are using. This will create an entry into the registry that speeds up the periodic checks for a dongle, whilst running the software. Toggle the appropriate dongle and select 'Next'.



The Select Program Folder screen appears. Click 'Next'.



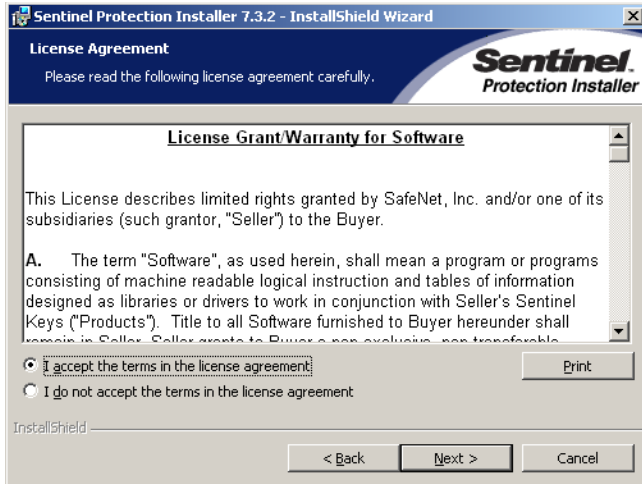
Installation is ready to begin. Click 'Install'.

At this point, you may be presented with the Sentinel Protection Installation Wizard. If so, proceed to step 3, otherwise proceed to step 4.

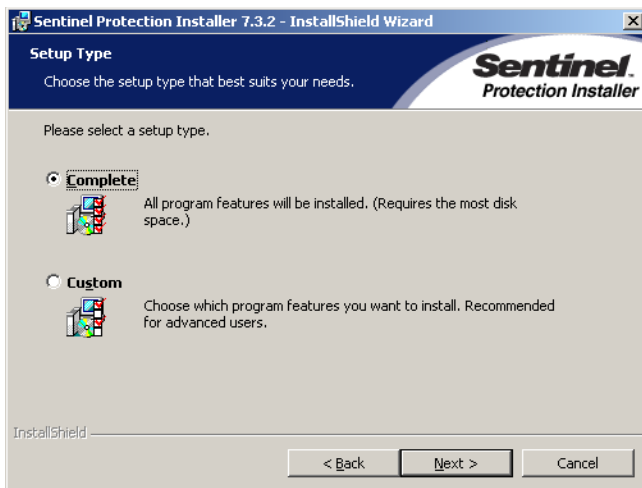
STEP 3



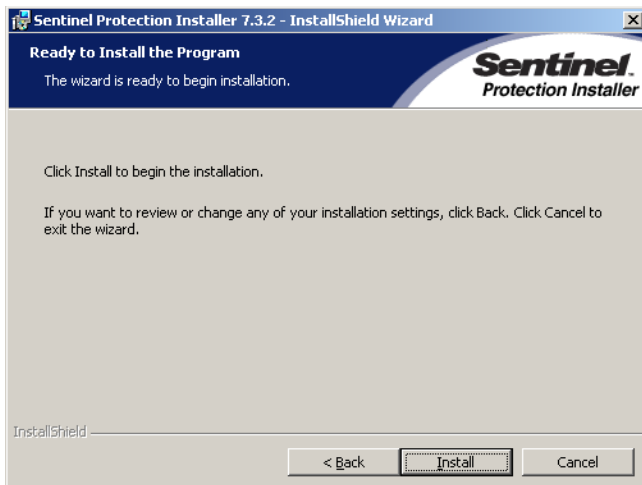
The Sentinel Protection Installation Wizard appears. Click 'Next'.



The License Agreement screen appears. Read through the agreement and click "I accept the terms of the license agreement" and then click 'Next'.



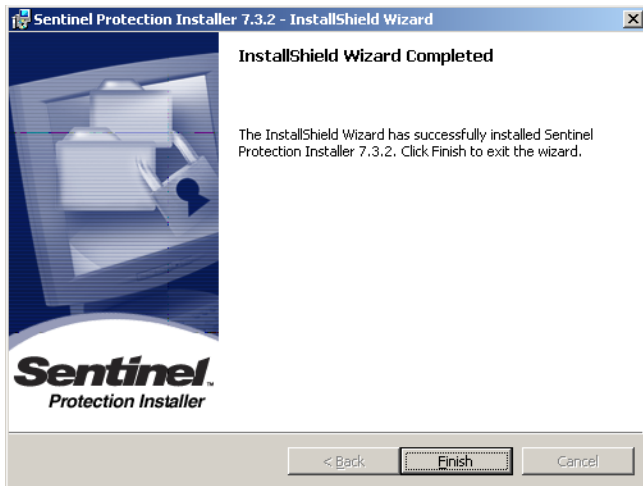
The Setup Type screen appears. Choose Complete, and click 'Next'.



The Sentinel Protection Installer is now ready to be installed. Click 'Install'.



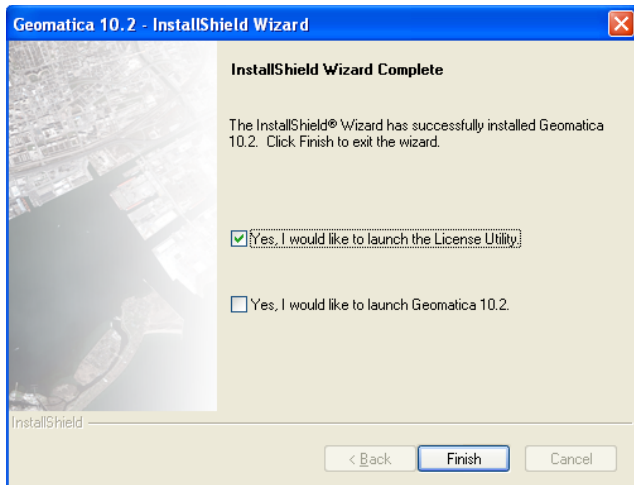
The Sentinel Protection Installer requires that the windows firewall be modified. Click 'Yes' to allow firewall settings to be modified. Otherwise you will have to do this manually after the installation has taken place.



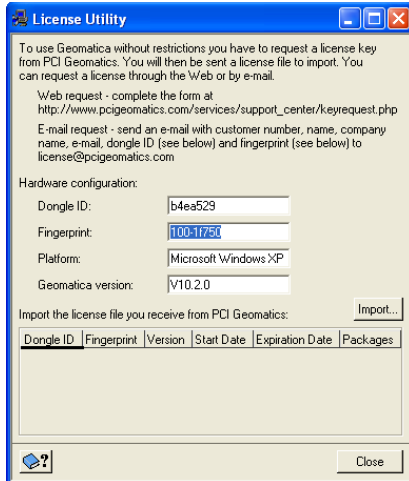
The Sentinel Protection Installer is Complete. Click 'Finish'.

Step 4

Now that the installation has completed you will need to request a license file, and then apply it into the license utility.



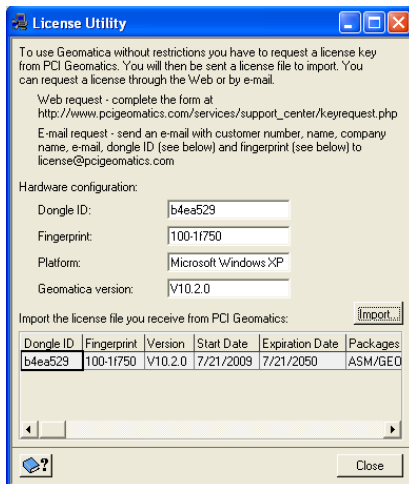
The Geomatica Installation Wizard is complete. Check "Yes I would like to launch the License Utility" and choose 'Finish'.



The License Utility Appears. Take a screenshot* of the license utility screen shown here, and send as an attachment to license@pcigeomatics.com

Also be sure to send with the e-mail your Customer number, name and company name. You will then be sent a license file by our PCI License team.

***Note, to take a screenshot, use CTRL+Print Screen**



Upon receiving your license file, click the import Button in the license utility (accessible through Start -> Programs -> PCI Geomatics ->Geomatica V10.2-> License Utility) and navigate to the location of the license file and import it.

The Dongle ID is the ID associated with the Sentinel Dongle you received with your software. The Fingerprint is an additional ID associated with this dongle.

The Packages lists all the packages you are entitled to with this license. For more information on purchasing additional packages please contact sales@pcigeomatics.com

The standalone installation of Geomatica 10.2 is now completed, and you may start using Geomatica.

For any technical assistance you can always contact license@pcigeomatics.com, or support@pcigeomatics.com. Please be sure to include all relevant screen captures, and to quote your customer number for easy reference.