

Geomatica 10.2 Floating License Server Installation Procedures



TUTORIAL

The purpose of this tutorial is to provide you with a friendly and easy to follow step-by-step guide for the floating license server installation of PCI Geomatica 10.2, along with client installations. This tutorial will be periodically updated to include troubleshooting tips.

BEFORE YOU BEGIN:

To complete the installation, you will require the following:

- 1 Geomatica 10.2 CD-ROM
- 1 USB or parallel port dongle

STEP 1

Attach the dongle shipped with your package to your computer.

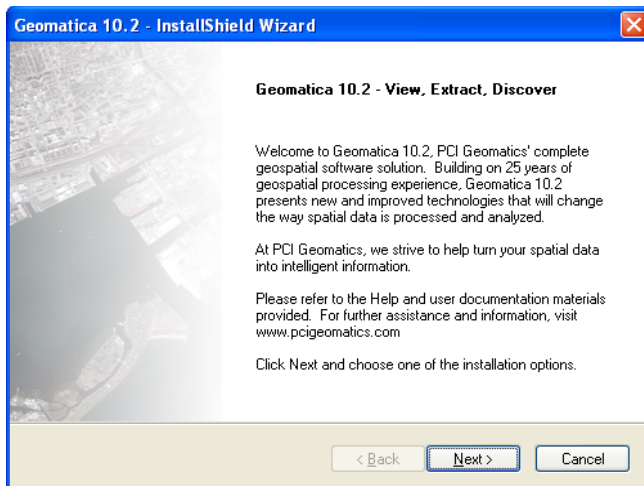
If you have a USB dongle, Windows should detect the dongle and you may get a popup window that asks you to install the Sentinel Protection Service and associated drivers. If this window appears, please follow the installation steps and **be sure to accept the firewall changes in the last installation window**

*****Note – selecting next without reading each window carefully may result in not accepting the firewall changes and the dongle software will not install successfully*****

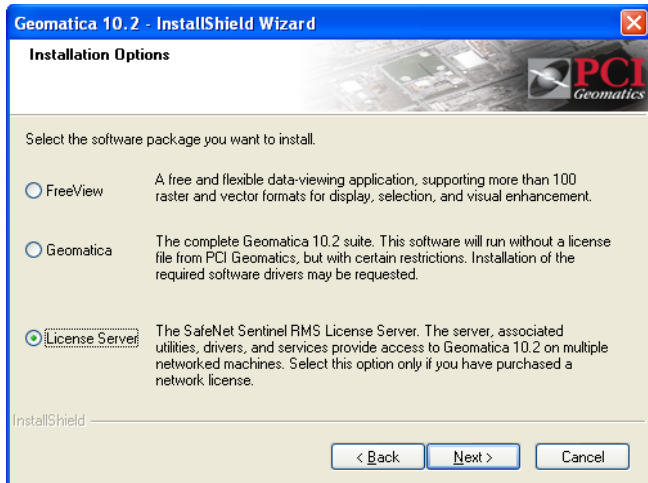
If no popup window appears, it likely means your system is already configured properly

STEP 2

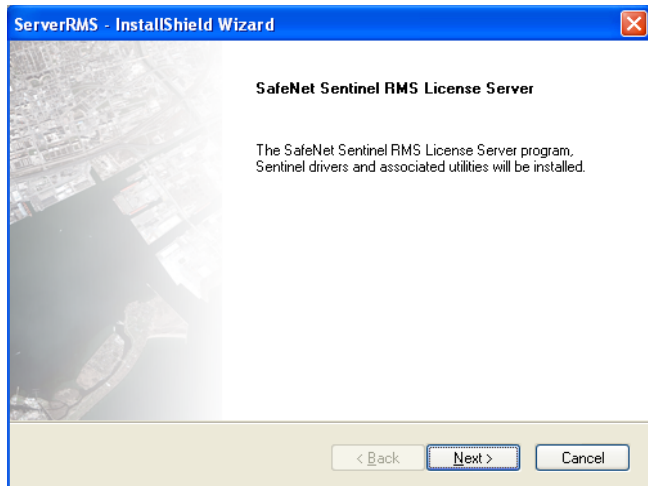
Insert the Geomatica 10.2 installation disk into your CD-ROM. Upon insertion of the disk, the setup should launch automatically. If this does not occur, please navigate to your CD-ROM drive using Windows Explorer and double-click setup.exe. The following window appears:



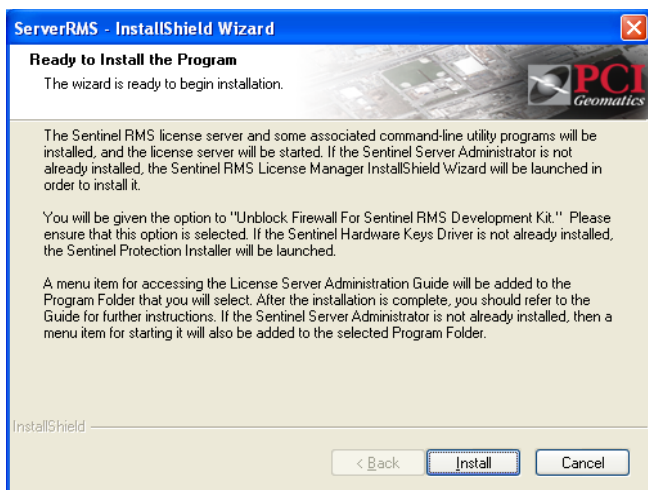
The Geomatica 10.2 installation wizard starts. Please select 'Next' to proceed



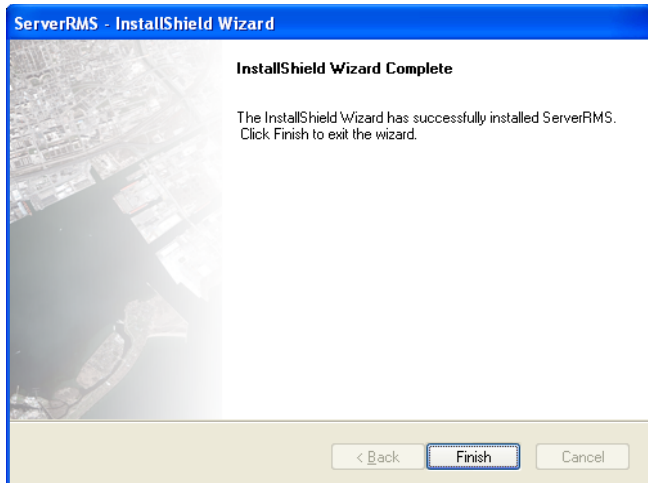
You are now presented with various installation types. Please select 'License Server' and click 'Next' to proceed.



The Safenet Sentinel RMS License Server installation wizard appears. Click 'Next' to proceed.



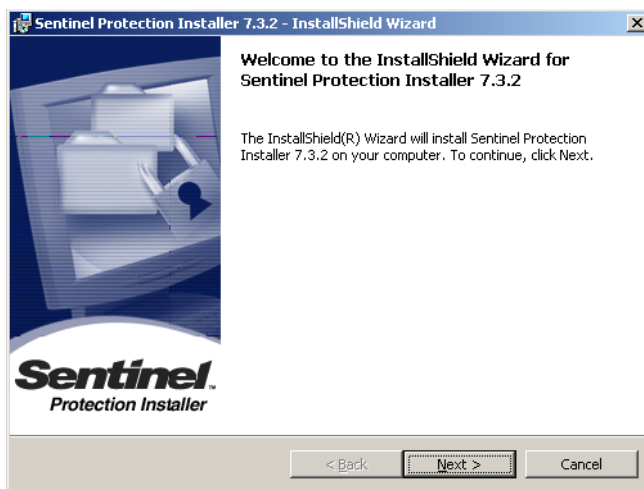
The Safenet Sentinel RMS License Server is now ready to begin installation. Please select 'Install' to continue.



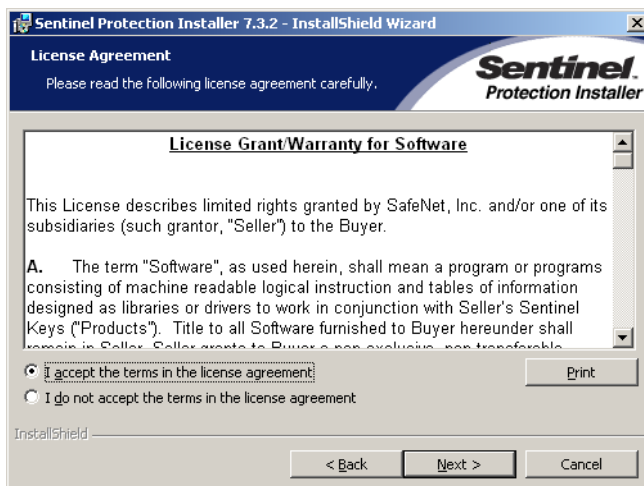
The Safenet Sentinel RMS License Server has been installed correctly. Please select 'Finish' to exit this part of the installation.

At this point, you may be asked to install the Sentinel Protection Installer. If so, proceed to step 3, otherwise proceed to step 4.

STEP 3



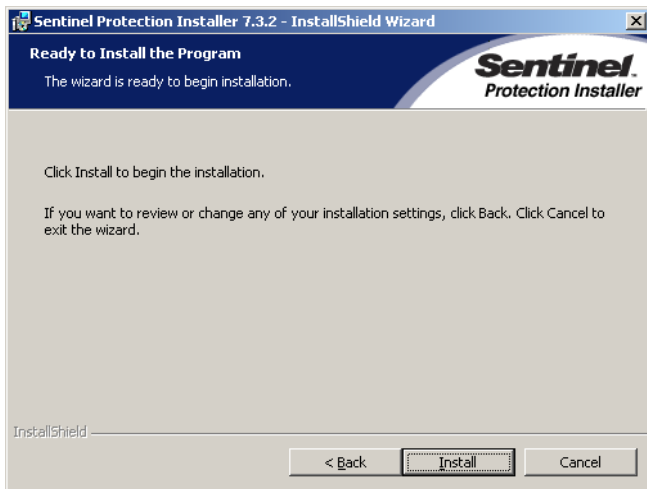
The Sentinel Protection Installation wizard appears. Please select 'Next' to proceed.



The Sentinel Protection Installer license agreement appears. Read through the agreement and select 'I accept the terms in the license agreement' along with 'Next' to continue with installation, otherwise installation will fail if agreement is not accepted.



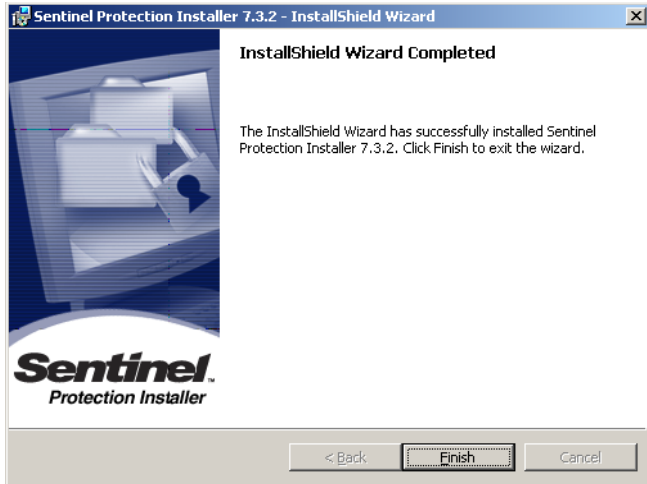
The Setup Type screen appears. Select 'Complete' and 'Next' to continue.



The Sentinel Protection Installer is now ready to be installed. Please select 'Install' to continue.

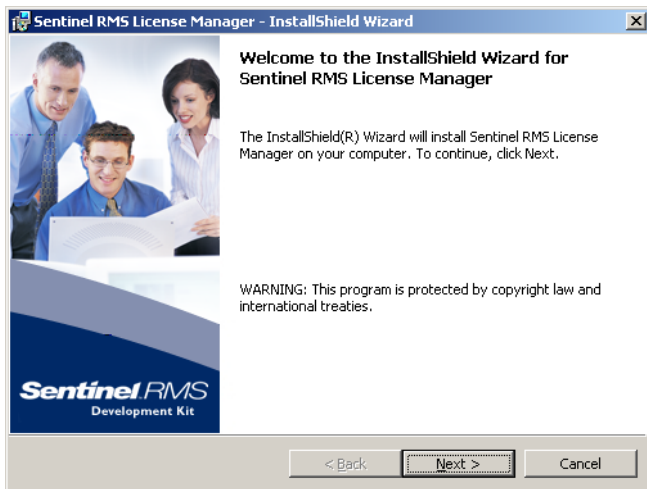


The Sentinel Protection Installer requires that the windows firewall be modified. Click 'Yes' to allow firewall settings to be modified.



The Sentinel Protection Installer is now completed successfully. Please select 'Finish' to proceed with installation.

Step 4



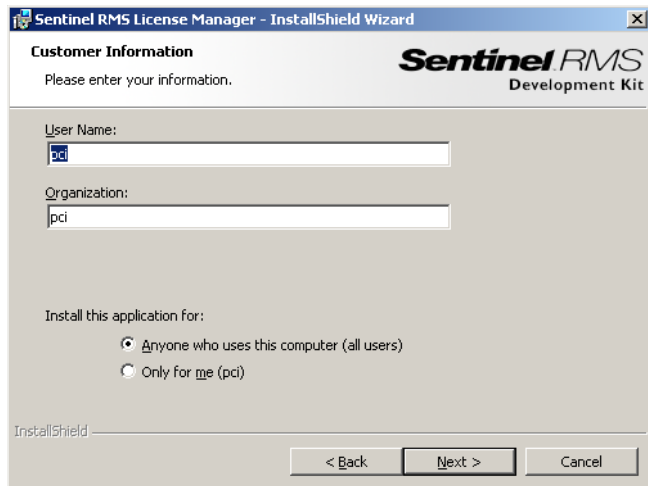
The Installation Wizard for the Sentinel RMS License Manager appears. Click 'Next' to proceed.



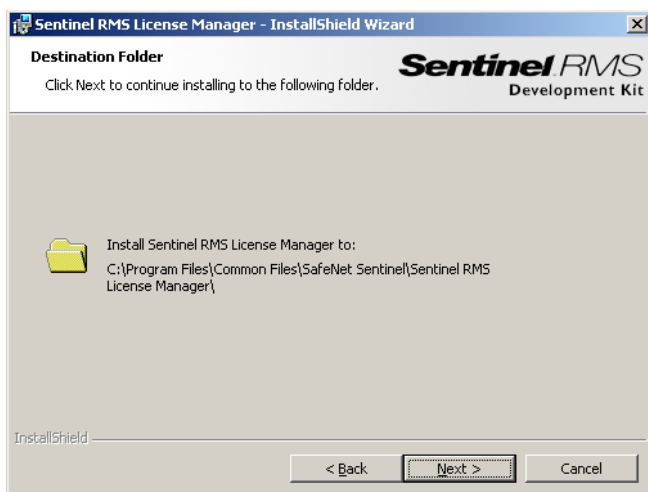
The Safenet Sentinel RMS License Server installation wizard appears. Click 'Next' to proceed.



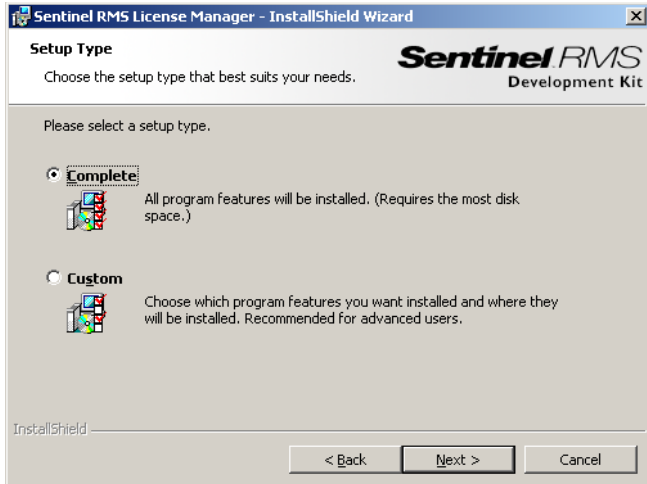
The license agreement for the Sentinel RMS License Manager appears. **Click “I Accept the terms in the license agreement”**, and then click 'Next' to continue with installation. Failure to do so will result in installation cancelling.



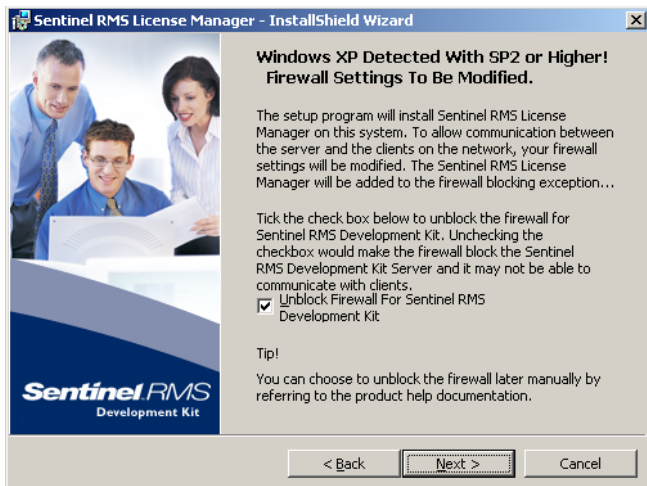
The Customer Information Window Appears. Fill out your information, and click 'Next' to proceed.



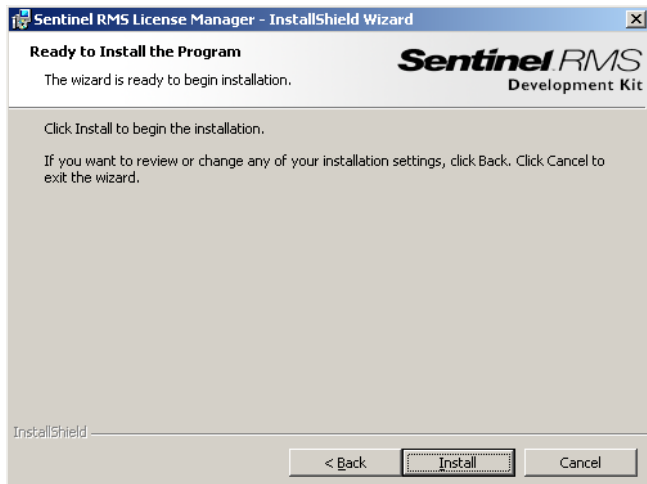
The Destination Folder is now shown. Click 'Next' to continue. Please note that in this version of Sentinel RMS you cannot specify the location to install the files.



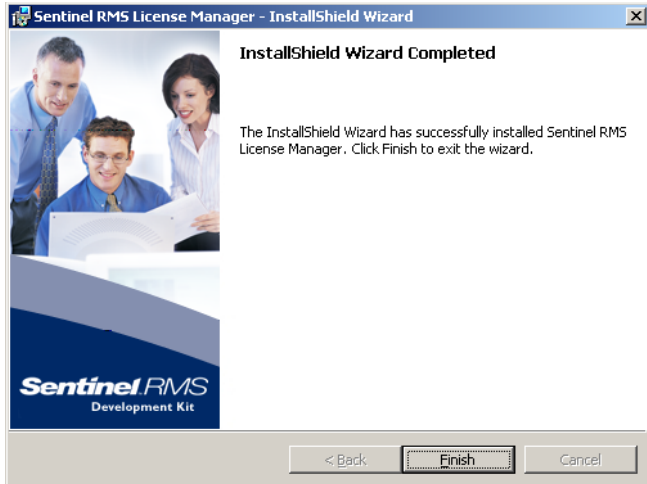
The Setup type must now be chosen. Select "Complete" and then click 'Next'.



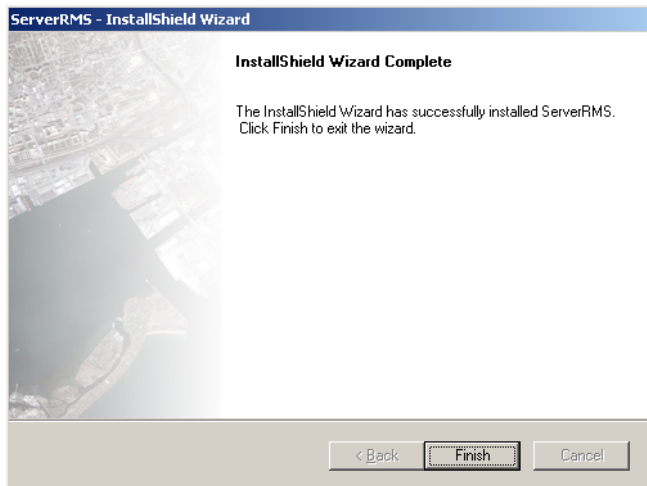
The Firewall Settings screen appears. In order for the license manager to operate and communicate with client machines, the "Unblock Firewall for Sentinel RMS Development Kit" **must be selected (i.e. Must have a check mark next to it.)** Click 'Next'.



The Sentinel RMS License Manager is now ready to be installed. Click 'Install'.



The Sentinel RMS License Manager is now installed. Click 'Finish'.

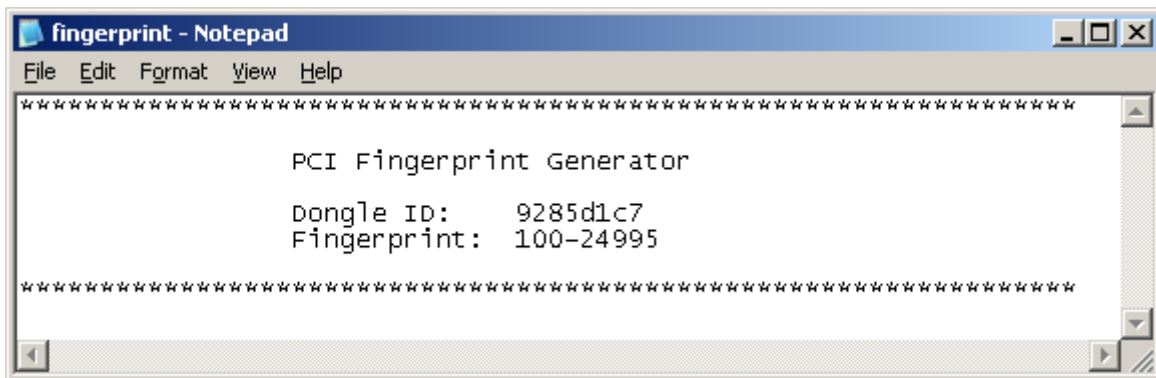


The ServerRMS installation wizard is now complete. Click 'Finish'.

At this point, you must now acquire your floating license from PCI Geomatics. To do this, first you will need to generate a footprint file. This can be done by navigating to the following:

Start → All Programs → PCI Geomatics → Server Administration → Info → Fingerprint

A text file will be generated, similar to the one shown below:



Send the information contained in this fingerprint file to license@pcigeomatics.com along with the following information:

- Customer Number
- Customer Name
- Company Name
- E-mail address at which you want to receive the license file
- Dongle ID (CPU ID) of the computer on which you installed the license server
- Fingerprint of the computer on which you installed the license server
- Platform of the computer on which you installed the license server
- Geomatica Version

Upon receiving your license file, proceed to step 5.

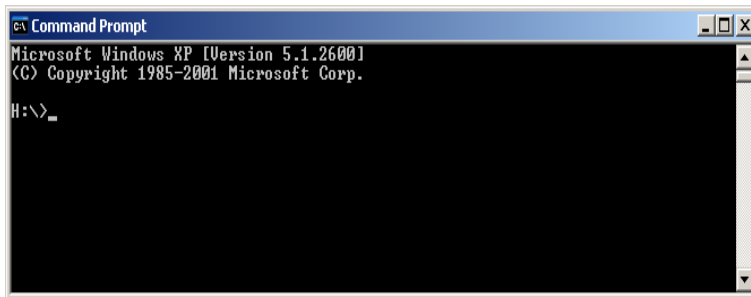
STEP 5

Upon receiving your license file from PCI Geomatics, you must now apply the license file to the license server. Save this license file in the following directory:

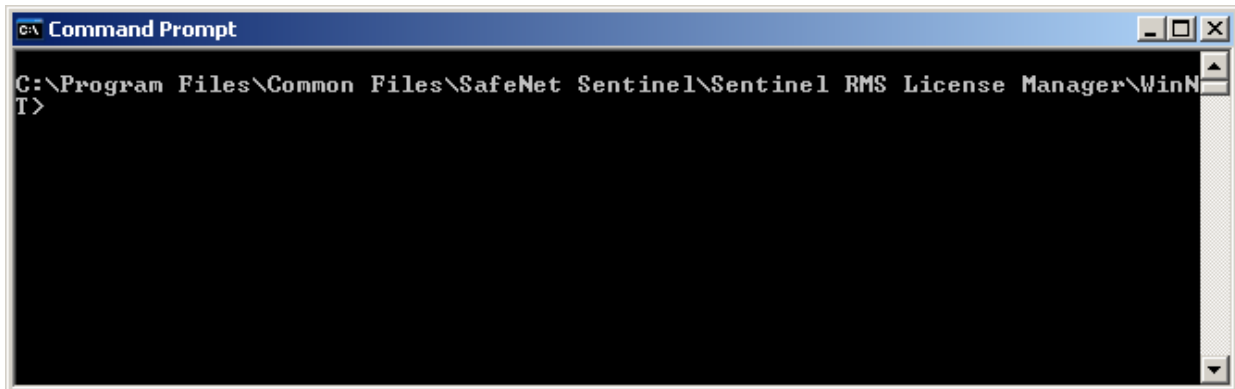
C:\Program Files\Common Files\SafeNet Sentinel\Sentinel RMS License Manager\WinNT

Then rename the license file to License.PCI

Now, open a command prompt by navigating to Start → All Programs → Accessories → Command Prompt.

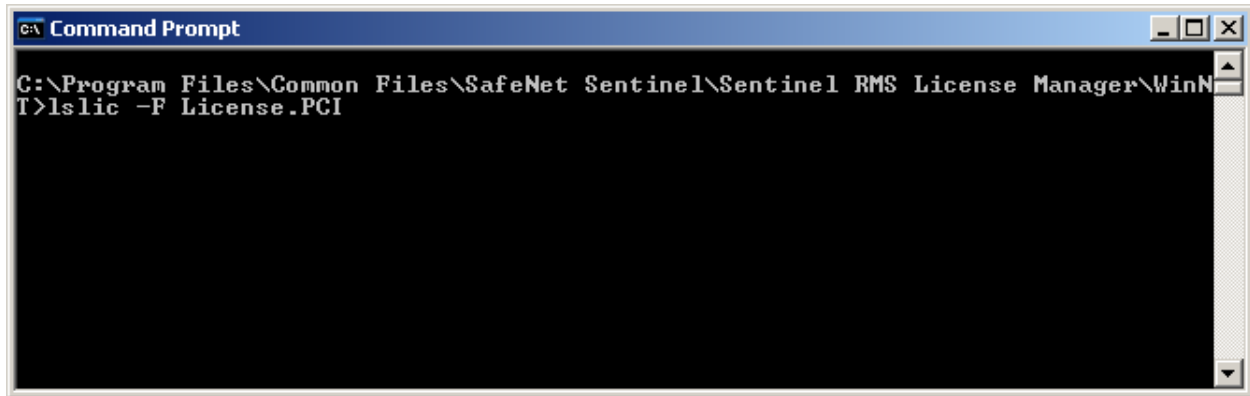


A command prompt window now appears.



In the command prompt, type the following command:

```
cd C:\Program Files\Common Files\SafeNet Sentinel\Sentinel RMS License Manager\WinNT
```



```
C:\Program Files\Common Files\SafeNet Sentinel\Sentinel RMS License Manager\WinNT
T>lslic -F License.PCI
```

Now type the following command, as shown in the window above:

```
lslic -F License.PCI
```

You have now successfully applied the license file to the license server. At this point, you may begin using the software (see step 6 to install the thick clients that will communicate with the license server).

Please note at this time the License Server is automatically started. If in the future you wish to manage the license server, you may use the following commands.

```
=====

Sentinel RMS License Manager 8.0.5.0
Copyright (C) 2006 SafeNet, Inc.

=====
```

```
Starting in command line mode
-H|-h      (help)
-X remove  (remove service)
-X install (install service)
-X start   (start service)
-X stop    (stop service)
-X status  (get server status)
-X commlne (start service on command line)
```

NOTE: If you use '-X commlne', this must be first on the command line

As an example, to start the license server, open a command prompt again, navigate to:

```
C:\Program Files\Common Files\SafeNet Sentinel\Sentinel RMS License Manager\WinNT
```

And type the command: `lservnt.exe -X start`

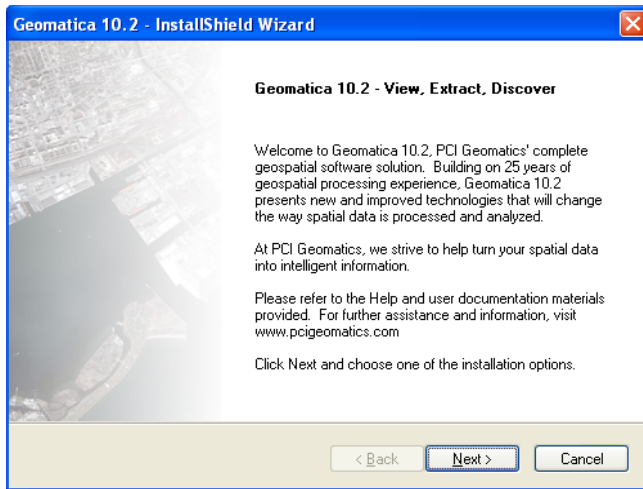
If you wished to stop the license server, you can navigate to the same directory and use the command `lservnt.exe -X stop`

For more information, please see page 10 of the install guide (Managing the license server).

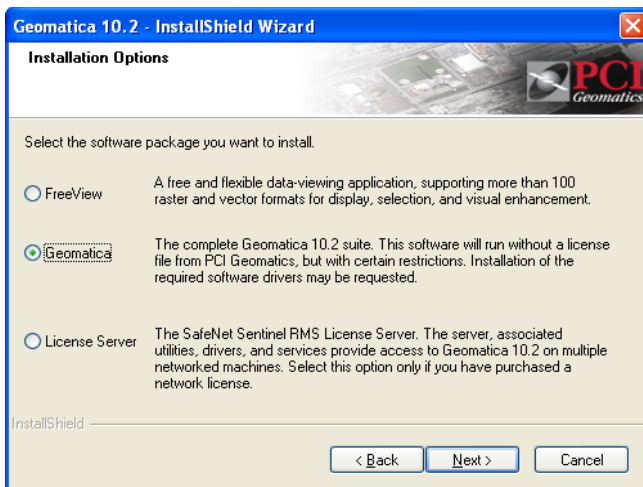
STEP 6

Now that the license server has been installed and started, you may install thick client installations on client machines which will communicate with the license server.

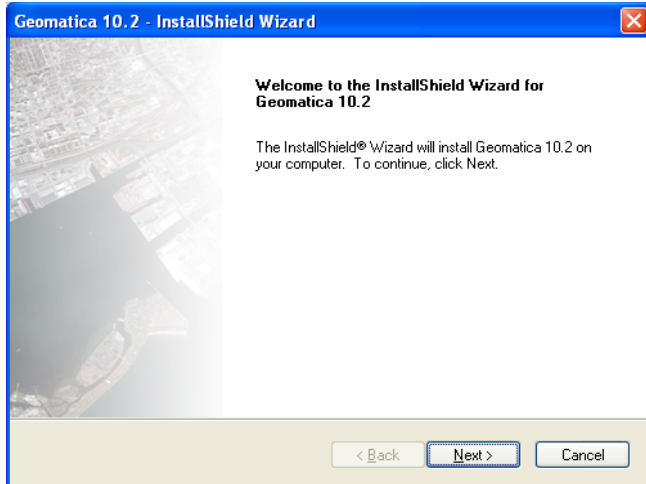
Insert the Geomatica 10.2 installation disk into your CD-ROM. Upon insertion of the disk, the setup should launch automatically. If this does not occur, please navigate to your CD-ROM drive using Windows Explorer and double-click setup.exe. The following window appears:



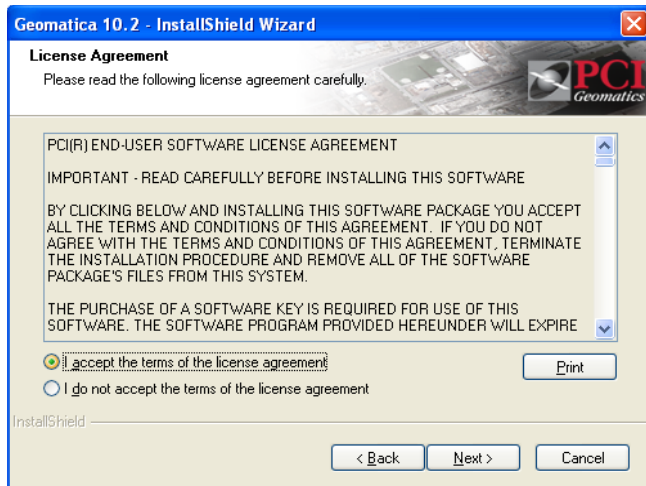
The Geomatica 10.2 Installation Wizard Starts. Click 'Next' to proceed.



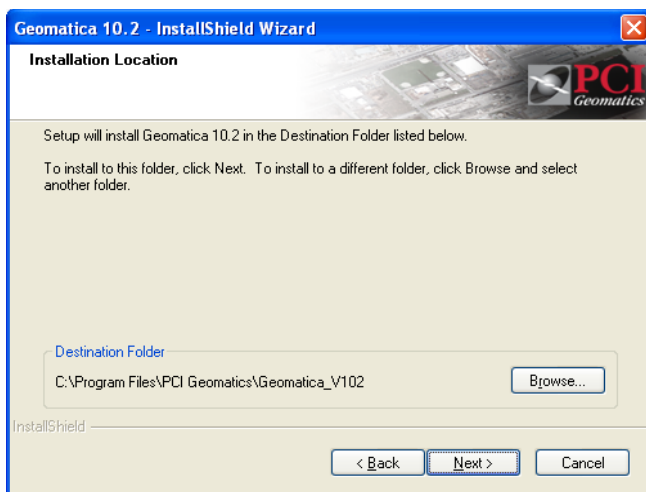
The Installation Options window appears. Select "Geomatica" and click 'Next'.



The Geomatica 10.2 Installation Wizard appears. Please select 'Next' to continue with installation.

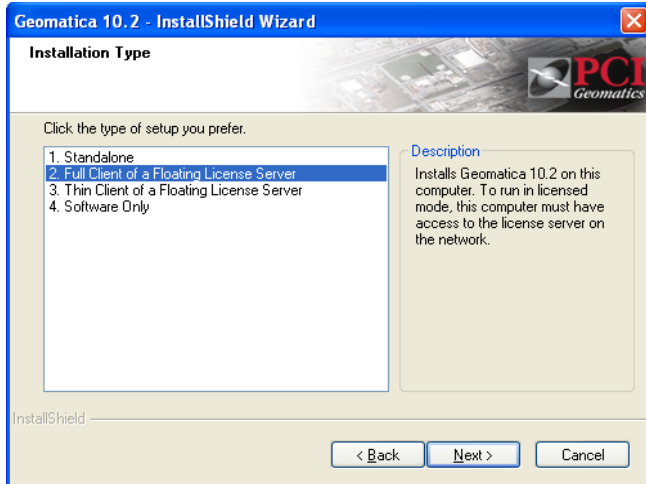


The Geomatica 10.2 license agreement appears. Read through the agreement and select 'I accept the terms in the license agreement' along with 'Next' to continue with installation, otherwise installation will fail if agreement is not accepted.

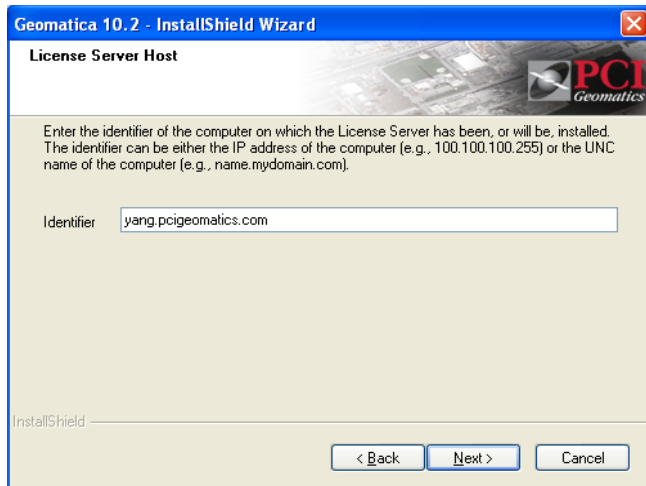


The Destination Folder is now shown. Click 'Next' to continue, or select a different destination path by selecting browse.

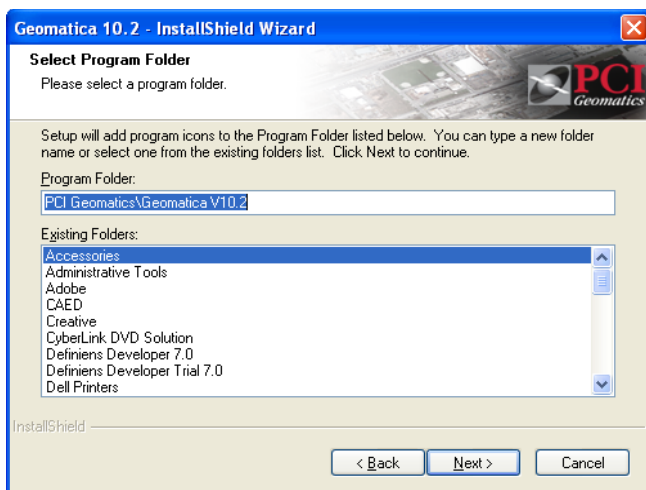
*Note: Due to lack of full read/write permissions in the "Program Files" directory on Windows Vista, the default destination folder on this platform will be changed to "C:\".



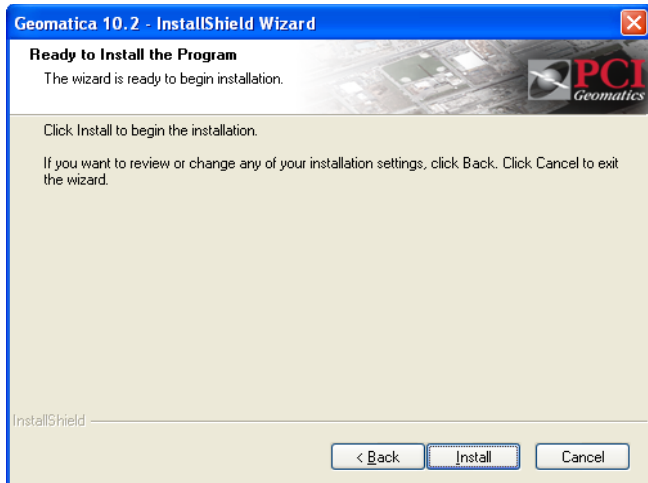
The Installation Type window appears. Select "Full Client of a Floating License Server" and click 'Next'.



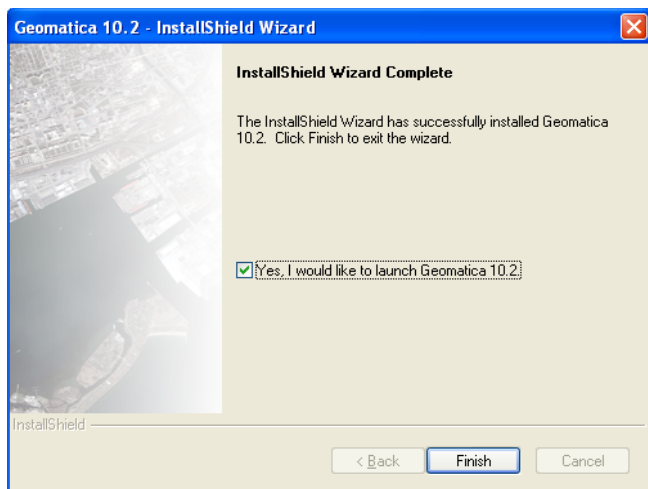
The License Server Host window appears. On this screen, you must type in the Identifier of the computer for which the server was installed. This can be the IP address of the server, or the UNC name of the computer. Then click 'Next' to proceed.



Now select the Program Folder to install the full client installation of Geomatica. Then click 'Next'.



The 'Full Client' installation is now ready to begin installing. Please select 'Next' to proceed.



The installation of Geomatica 10.2 'Full Client' is now complete. To begin utilizing Geomatica immediately please check the box accordingly and select 'Finish'. To exit the installer simply select 'Finish'.

Repeat Step 6 for all client machines that will communicate with the license server.

Frequently Asked Questions

Q: *Is there another way to start and stop the Sentinel License Server other than using DOS?*

A: Yes. An alternative method to using DOS to manage the Sentinel License Server is to access the "Services" tool in Microsoft Windows' administrative tools. To do this, go to Start | Control Panel | Administrative Tools | Services. In the Services Window, you will find "Sentinel RMS License Manager". You can right-click the "Sentinel RMS License Manager" and choose either START or STOP to start and stop the license manager.

Q: *Does Geomatica 10.2 support ghost or silent installations?*

A: Geomatica only supports ghost or silent installations for that of a full client, or thick client installation. Since Geomatica places entries into the registry you cannot simply copy the PCI Geomatics folder onto each corresponding machine. You will need to open the registry and create the pertaining entries. To do so, complete the installation on one client machine then view the registry and create a mirror of those entries onto each corresponding machine. In addition copy over the PCI Geomatics folder to each client machine.