

Geomatica 10 Stand Alone Installation Procedure



TUTORIAL

Thank you for purchasing PCI Geomatica 10! This tutorial aims to step through a simple stand alone installation for Geomatica 10. In addition to a general overview of the installation options some troubleshooting tips will be addressed.

BEFORE YOU START:

To complete the installation you will need the following things:

- 1 Geomatica 10 CD-ROM
- 1 USB or parallel port Dongle
- PCI License Key
 - This should have come with your software package or has been sent to you via email by PCI licensing department. If you do not have a PCI license please contact license@pcigeomatics.com

STEP 1.

Attach the dongle shipped with your package to your computer.

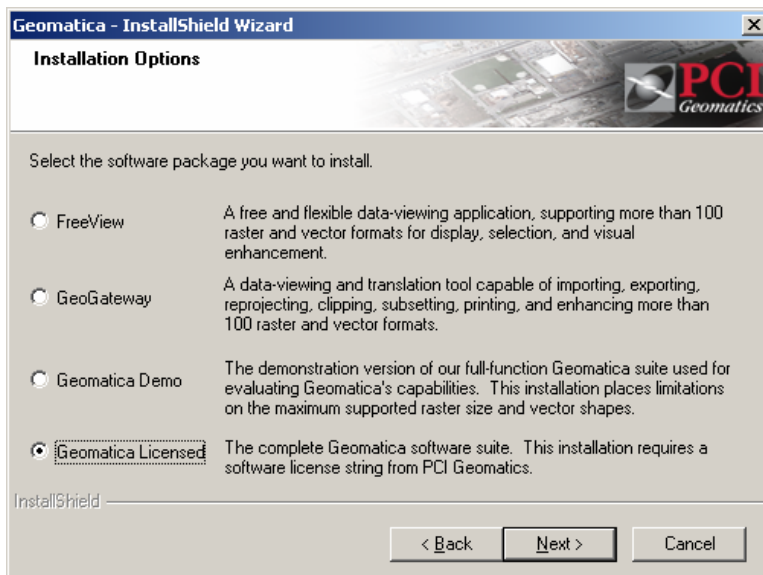
If you have a USB dongle, windows should detect the dongle and you may get a window that asks to install the Sentinel Protection Service and associated drivers. If this window appears, please follow the installation steps and **be sure to accept the firewall changes in the last installation window**

*****Note – selecting next without reading each window carefully may result in not accepting the firewall changes and the dongle software will not install successfully*****

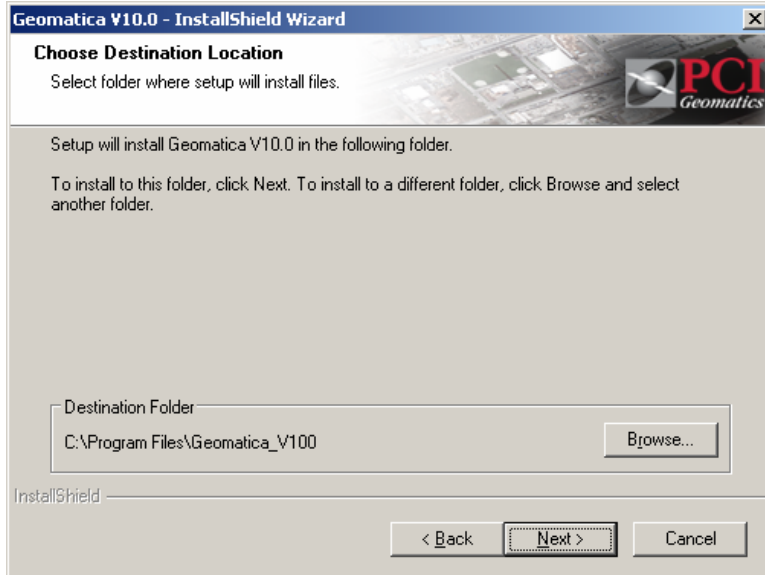
If no pop-up window appears, it likely means you system is already configured properly

STEP 2.

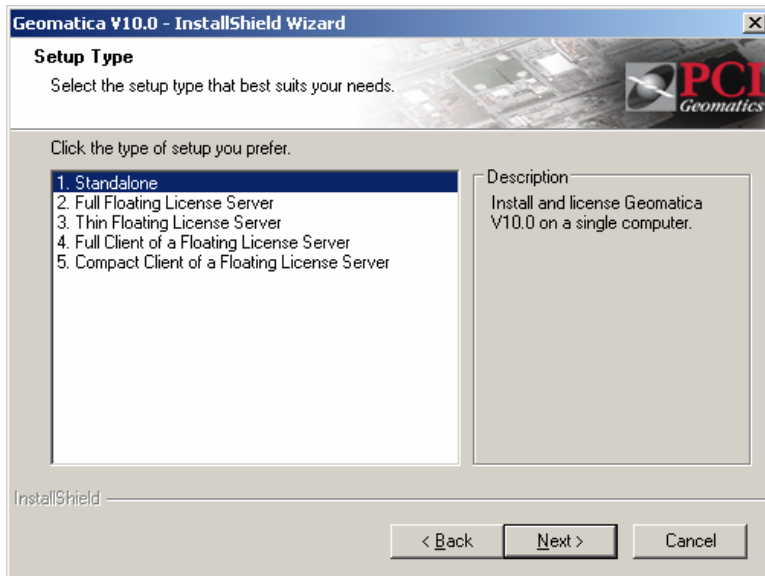
Insert the CD-ROM. The setup process should begin automatically. If not, navigate to your cd drive via windows explorer and select setup.exe. Read and accept the license agreement and select next



The next window we are given asks us what type of software do you want to install. Select 'Geomatica Licensed'.



Choose a root destination for the Geomatica Install.



If you have a stand alone license key and are looking to use the software on a single computer, select Standalone.

For floating license server, or client to a floating license server please see the tutorial specific to that installation type



Select the Dongle type that was shipped to you.

After selecting next, the software should finish the installation process and the installshield wizard will exist.

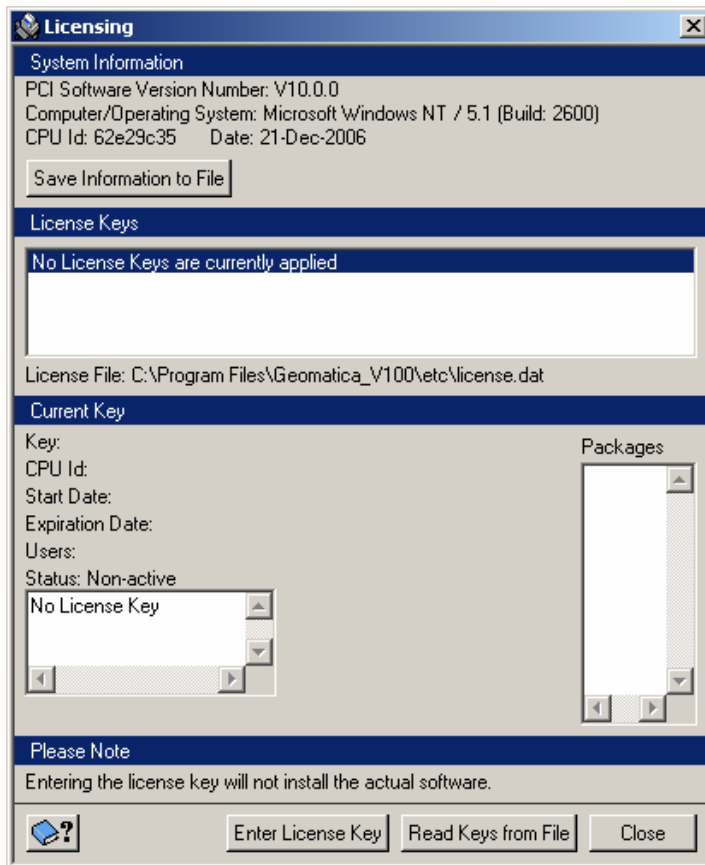
At this point, you may be prompted to install the third party drivers from SafeNet. Follow the installation steps for the drivers and be sure to allow any firewall changes it asks for.



Now the software is properly setup as a stand alone installation. The next step is to apply your license key to the license manager. To start the license manager go to:

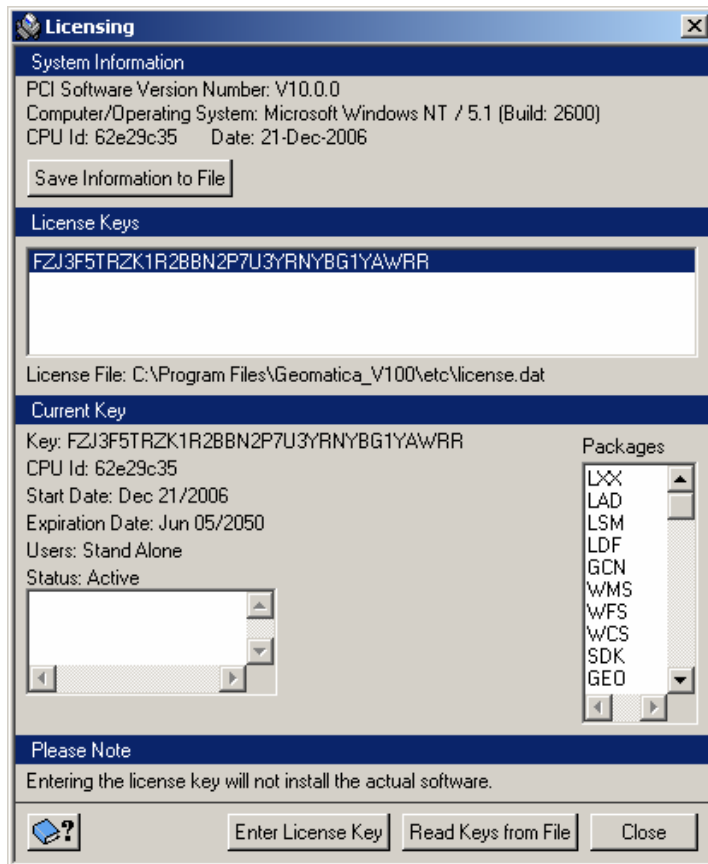
Start → Programs → PCI Geomatics → PCI Geomatica v10 → License Manager

The screen to the left appears. Select 'License' to apply the license key



You are then presented with this window. Note the system information at the top indicating the CPUID of the dongle attached to your machine. Note that the CPUID is associated with the dongle and not your actual machine.

To apply the license string select 'Enter License Key' and type (or copy paste) your license string into the window. Then select accept.



After accepting the license string, your license manager should look something like the image on the left. Your license key should be shown along with a list of packages this license string activates for the software.

For more information on purchasing additional packages please contact sales@pci-geomatics.com

The information under Current Key gives other important information about your license.

- The CPUID as read by the license key, matches the system information CPUID
- The expiration date of the license key shows this key is still valid.
- The status of the key is active

You have now successfully installed and licensed your copy of Geomaitca 10. Before running the software you should download the latest Geomatica 10 patch from our website

http://www.pci-geomatics.com/services/support_center/updates/updates_v10.html

GENERAL TROUBLESHOOTING

Q: When I run the setup program, it crashes or I get a cyclic redundancy error

A: This sometimes happens when CD-ROM drives fail to read the disc properly. Try copying the contents of the disc locally and running the setup from your hard drive

Q: When I go to the license manager I get a message "Dongle Not Detected"

A: Likely the dongle drivers have not been installed properly. To manually install the drivers run the executable found here: C:\WINDOWS\pci-geomatics\sys\nt\lic\superpro\installer\sntsetup.exe. Another possible cause is that you selected the wrong dongle type during the setup process

Q: I apply the license successfully however when I run the software it starts in demo mode

A: Check that the CPUID in the 'System Information' section of the license manager corresponds to the CPUID in Current Key section. Check that the status is Active and the expiration data has not been reached.

STILL HAVING PROBLEMS?

If you are still having difficulties after following the steps in this guide you can contact PCI Support at support@pcigeomatics.com. To better service your request we ask customer to please include the following information in their initial email

- Customer #
- Customer / Organization Name
- Operating System and Service Pack of the computer (e.g. Windows XP SP-2)
- Geomatica version (check licenese manager)
- Type of Dongle (USB, Pro, SuperPro)
- CPUID of dongle (check the license manager)
- Are there other dongles on the machine?
- Your installation log (start → Program Files → PCI Geomatics → Geomatica v10.0 → info → Install Log)
- Error message or detailed description of the problem