

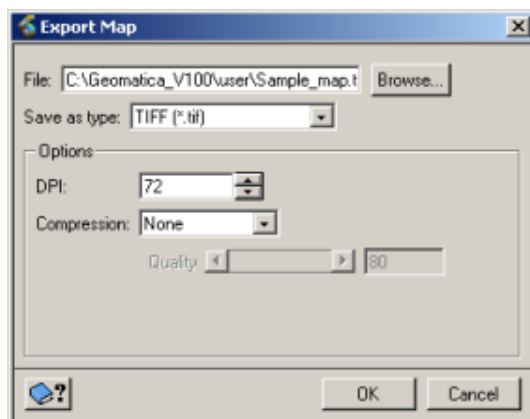
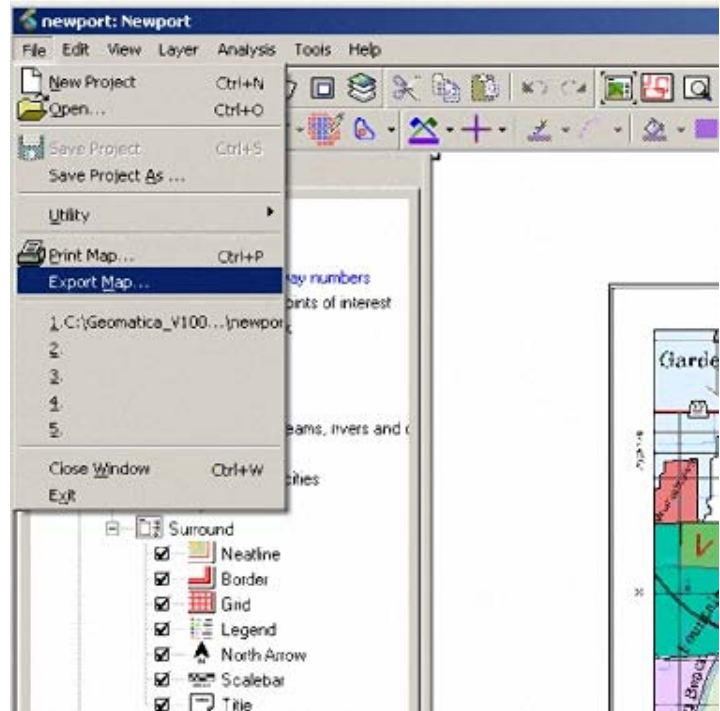
Exporting a Map as an Image

TUTORIAL

The new export map panel in Focus allows you to export your finished map to an image file so that you can incorporate it with other software. It provides an improved graphic user interface with increased format support, and more options. Maps can now be exported to any of the following formats, with format-specific options available: Adobe Illustrator, JPEG, JPEG 2000, PCIDSK, TIFF, BMP, HP RTL, and EMF.

To export a Map to a file:

1. Open the **Export Map** dialog box by going to **File | Export Map...** on the main menu
2. Type a path and file name or click **Browse** to locate and select a location for the file to export in the **File** box
3. Choose a file format from the **Save as type** list box.



4. In the **Options** area, set the parameters, depending on the following format types: Adobe Illustrator, JPEG, JPEG 2000, PCIDSK, TIFF, BMP, HP RTL, EMF.
5. Click **OK**.