

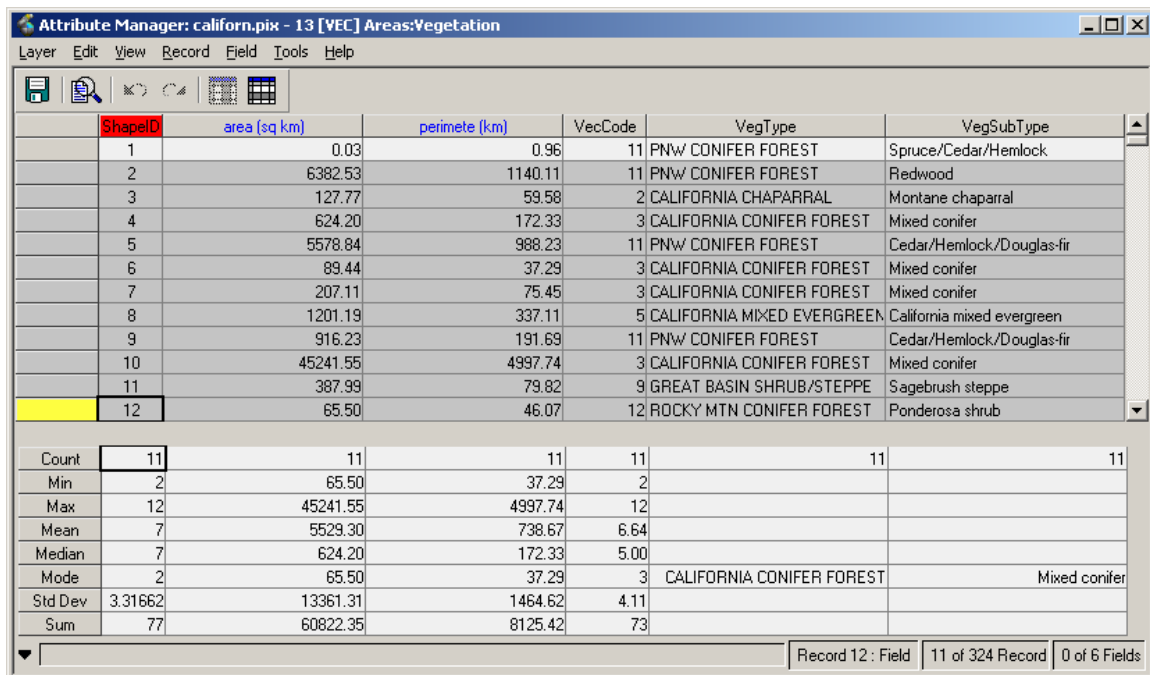
TUTORIAL

Charts can be created of layer attributes to assist in the analysis and presentation of the data. Various chart types are available: pie, column, bar, line, and scatter plots. More than one chart can be created for a particular layer. Changes made to layer attributes would be reflected in a chart. There are different file formats for the chart to be exported to, such as .jpg and .tif.

In this QuickGuide, the basic steps for creating a chart are outlined.

Step 1: Activate chart tool

1. Open the Attribute Manager of the layer of which a chart is to be made:
 - right-click on layer name in Maps tab and select Attribute Manager
 - OR
 - click on the layer name in the Maps tab and go to Layer > Attribute Manager in the menu bar.
2. In the Attribute Manager, select the records for graphing:
 - use the SHIFT key to manually select the records



ShapeID	area (sq km)	perimete (km)	VecCode	VegType	VegSubType
1	0.03	0.96	11	PNW CONIFER FOREST	Spruce/Cedar/Hemlock
2	6382.53	1140.11	11	PNW CONIFER FOREST	Redwood
3	127.77	59.58	2	CALIFORNIA CHAPARRAL	Montane chaparral
4	624.20	172.33	3	CALIFORNIA CONIFER FOREST	Mixed conifer
5	5578.84	988.23	11	PNW CONIFER FOREST	Cedar/Hemlock/Douglas-fir
6	89.44	37.29	3	CALIFORNIA CONIFER FOREST	Mixed conifer
7	207.11	75.45	3	CALIFORNIA CONIFER FOREST	Mixed conifer
8	1201.19	337.11	5	CALIFORNIA MIXED EVERGREEN	California mixed evergreen
9	916.23	191.69	11	PNW CONIFER FOREST	Cedar/Hemlock/Douglas-fir
10	45241.55	4997.74	3	CALIFORNIA CONIFER FOREST	Mixed conifer
11	387.99	79.82	9	GREAT BASIN SHRUB/STEPPE	Sagebrush steppe
12	65.50	46.07	12	ROCKY MTN CONIFER FOREST	Ponderosa shrub

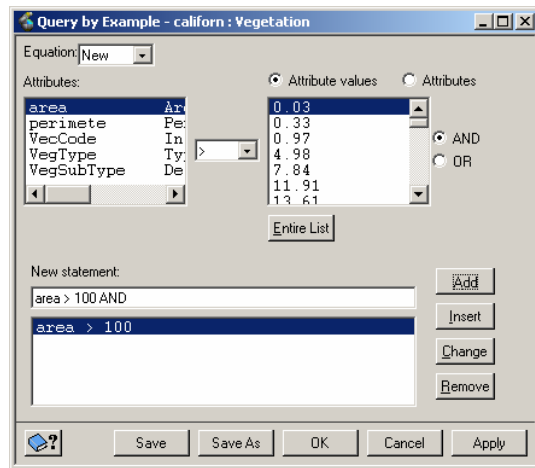
Count	11	11	11	11	11	11
Min	2	65.50	37.29	2		
Max	12	45241.55	4997.74	12		
Mean	7	5529.30	738.67	6.64		
Median	7	624.20	172.33	5.00		
Mode	2	65.50	37.29	3	CALIFORNIA CONIFER FOREST	Mixed conifer
Std Dev	3.31662	13361.31	1464.62	4.11		
Sum	77	60822.35	8125.42	73		

OR

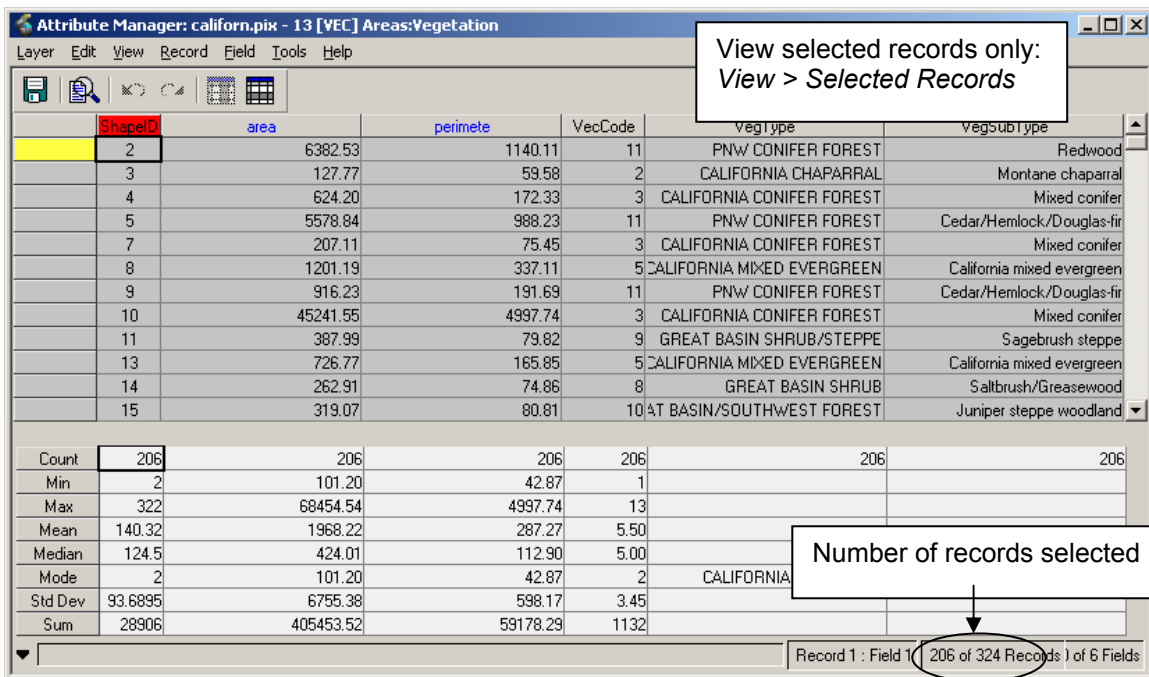
- enter a query expression to select a particular set of records:
go to Record > Query by > Example to open the expression dialog box

To enter query expression:

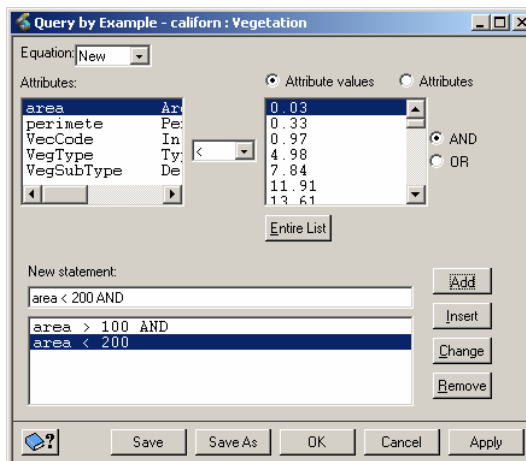
- select an attribute and a relational operator
- select an attribute value by one of the following options:
 - a) from the list
 - b) select another attribute (click on Attribute option)
 - c) manually input the value in New Statement
- select AND or OR operator
- the expression will be shown under New Statement
- click on the Add button
(example shown on the right)



- if the query expression is complete, click on the Apply button and the records will be shown to be selected on the Attribute Manager (see below)



- if the query expression is incomplete, repeat the steps above to enter the remaining conditions
(example shown below)



Updated: 1/25/2006

The information in this document is subject to change without notice and should not be construed as a commitment by PCI Geomatics. PCI Geomatics assumes no responsibility for any errors that may appear in this document. Copyright © 2006 PCI Geomatics inc. All rights reserved.

- Once records are selected, go to Tools > Chart and select the desired chart type. A preview of the chart will be displayed. Please note that the chart illustrates each selected record.

Below are two chart examples:

(A) column chart of area of manually selected records

(B) pie chart of vegetation types with an area between 100 and 200 unit area

(a more representative chart would be to divide the pie chart based on vegetation types, not individual records – see **To Group Records** below)

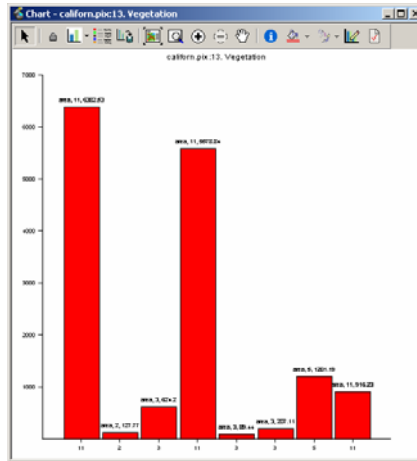


Chart A

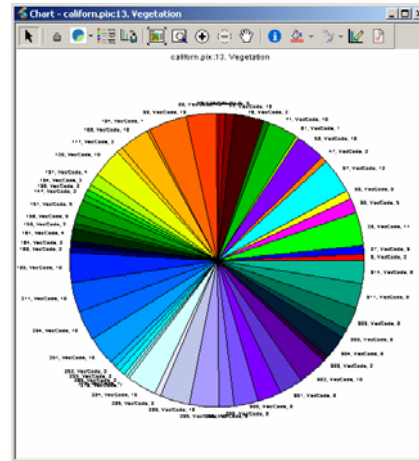



Chart B

Step 2: Define Chart

Charts can be customized using the various tools in the Chart Viewer toolbar:

- Click on the Chart Definition icon .
- In the subsequent window, under the **Definition** tab, select the attribute to be graphed. The type of chart can be changed. Under the **Options** panel, chart title, axis heading, and other chart properties can be specified.

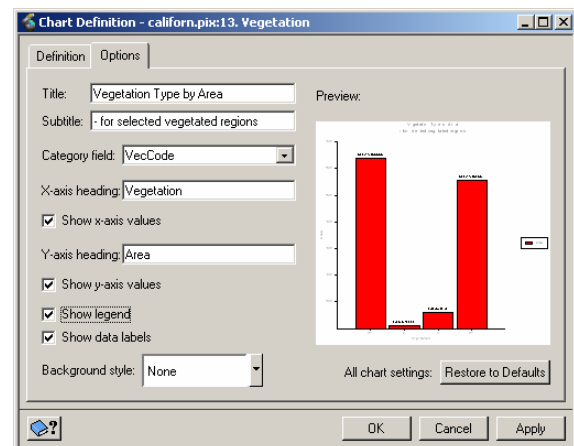
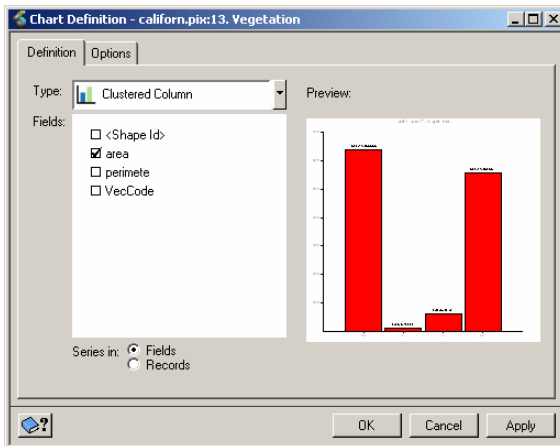



Chart type  and Legend  can be specified using the corresponding icons in the toolbar as well.

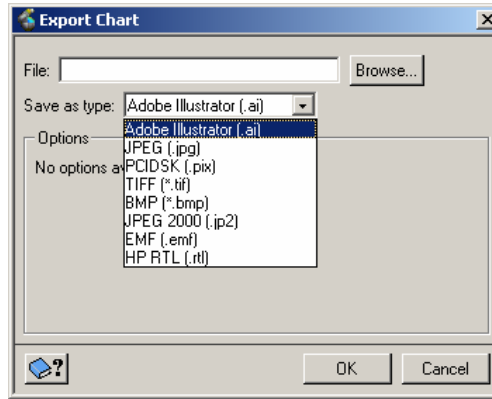
Updated: 1/25/2006

The information in this document is subject to change without notice and should not be construed as a commitment by PCI Geomatics. PCI Geomatics assumes no responsibility for any errors that may appear in this document. Copyright © 2006 PCI Geomatics inc. All rights reserved.

Step 3: Export Chart

After chart is defined, it can be exported to a variety of formats.

Click on the Export Chart icon  and specify the file name and file format in the Export Chart panel.



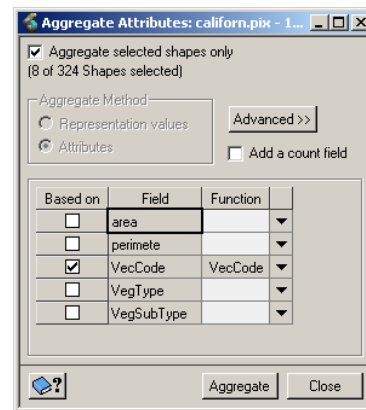
To Group Records

Charts can represent records that are grouped based on a particular attribute.

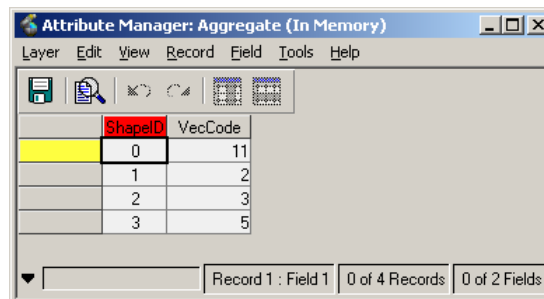
1. Select records either manually or by a query (as described above).
2. Go to Tools > Aggregate Attributes.
3. In the subsequent panel, check off the option “Aggregate selected shapes only.” Select the attribute(s) to which the records are to be grouped in.

Click on the Advanced button to include other fields in the chart if necessary.

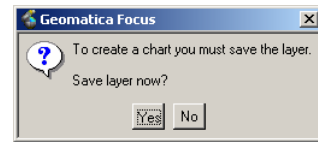
4. Click on the Aggregate button.



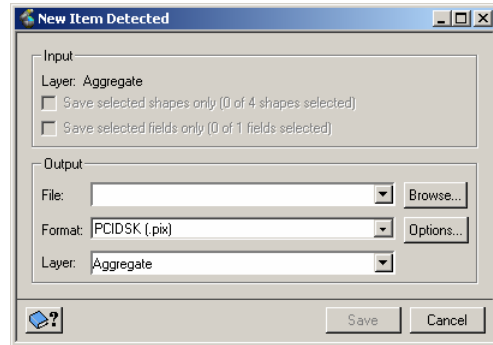
5. The result of grouping selected records will be shown in the subsequent window.



- Go to Tools > Charts and select chart type.
The following prompt will be displayed:

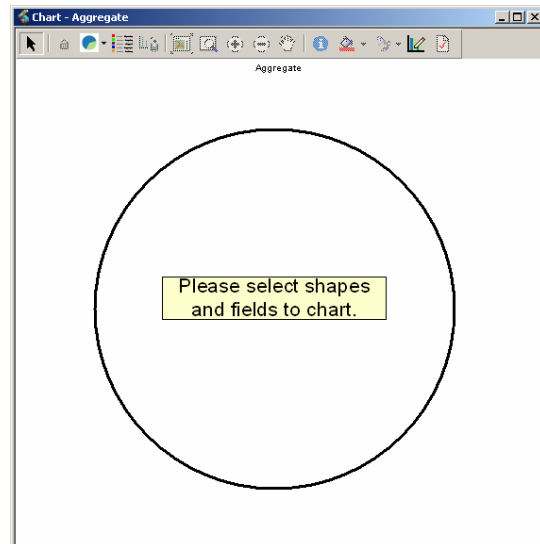


Click Yes and enter in a file name in the subsequent New Item Detected window:

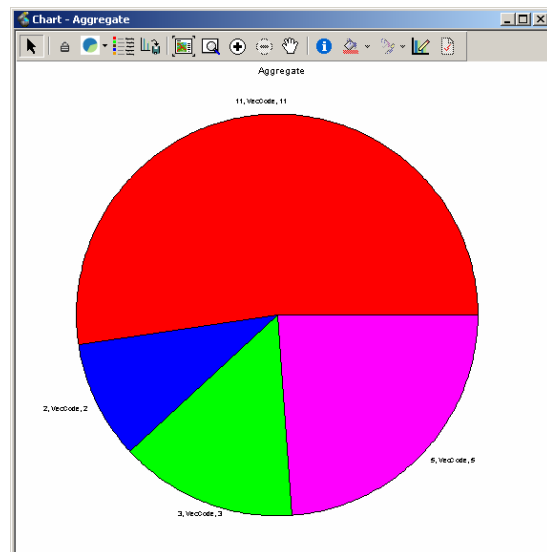


The selection is not permanently saved at this stage. A prompt will appear when the Chart Viewer is closing, asking if the layer needs to be saved.

Afterwards, the Chart Viewer will open as shown:



- In the Attribute Manger: Aggregate window, select the records to be included in the chart. There is an option to select all records: Record > Select All.
- After records are selected, click on the Chart Definition icon and specify the field(s) to chart. Click Apply and the chart will be shown in the Chart Viewer.



Updated: 1/25/2006

The information in this document is subject to change without notice and should not be construed as a commitment by PCI Geomatics. PCI Geomatics assumes no responsibility for any errors that may appear in this document. Copyright © 2006 PCI Geomatics inc. All rights reserved.