

TUTORIAL

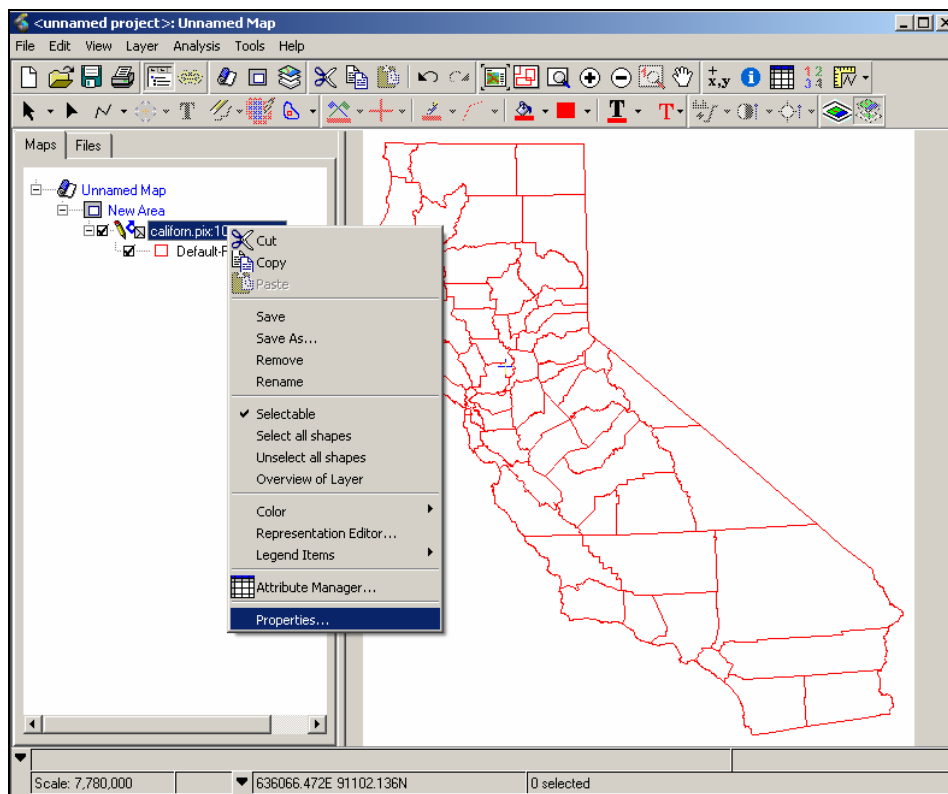
Adding Labels

Attributes of shapes in vector, grayscale, and pseudocolor layers can be displayed as labels on a map. A streamlined method is available to add and modify labels to desired features.

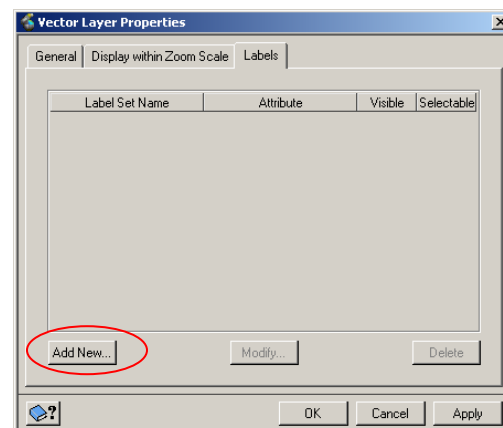
In this QuickGuide, the basic steps to add labels of a vector layer are outlined.

Add Labels

1. Right-click on the layer in the Maps tab that is to be labeled and go to Properties.

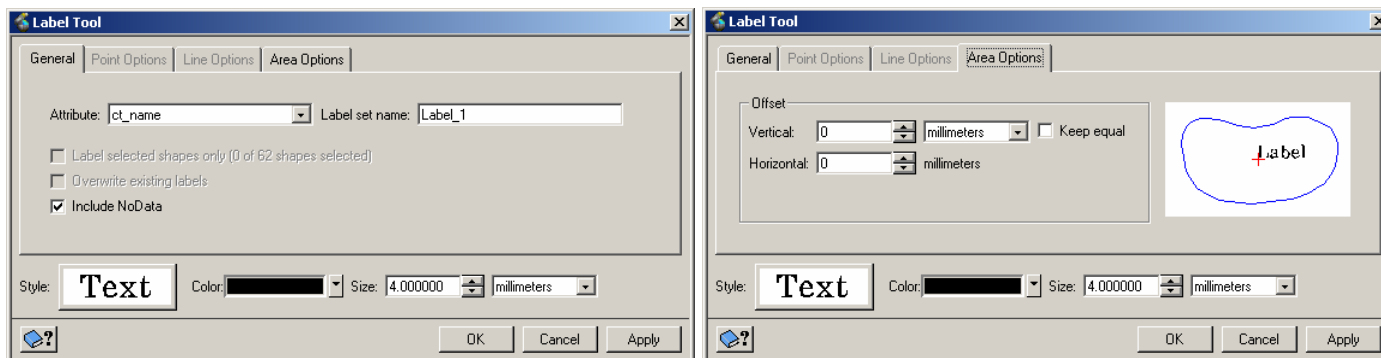


2. In the Properties window, go to the Labels tab. Click on the Add New button to open the Label Tool dialog box.



3. In the Label Tool dialog box, select the attribute to be labeled.

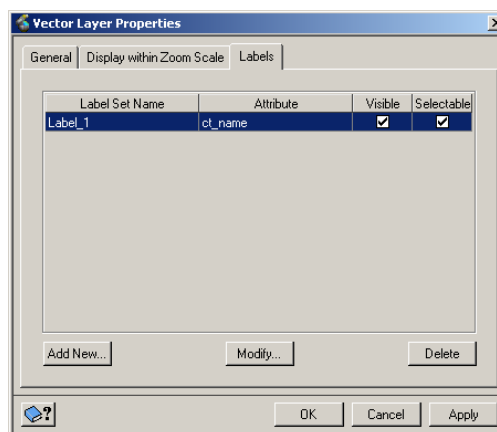
Under the **General** tab, select the font style (click on the Text style button), colour and size. Click Apply. Under the **Area Options** tab, specify the placement of the label relative to the centre of the shape. The preview displays the label placement as the offset values change. Click Apply and OK.



4. The Vector Layer Properties will then be updated as shown below. In this panel, a particular label set can be defined as visible and/or selectable.

Changes to individual labels can be made if the labels are selectable.

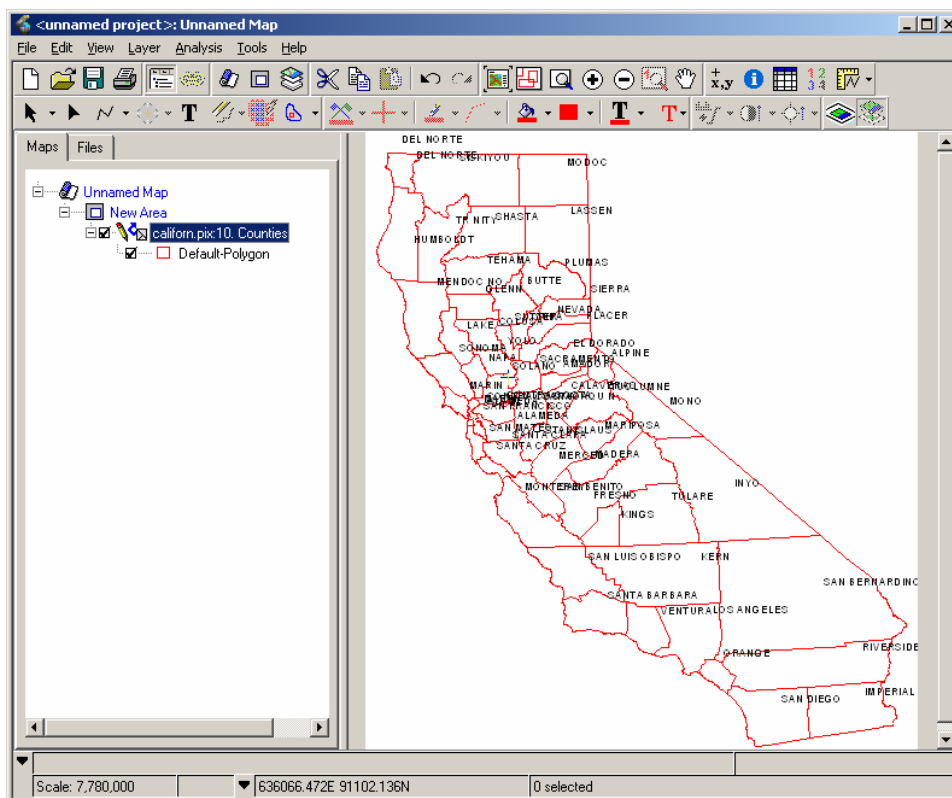
A particular label set can be deleted by first selecting the desired label set and then clicking on the Delete button.



5. Click OK and the labels will be added to the map view.

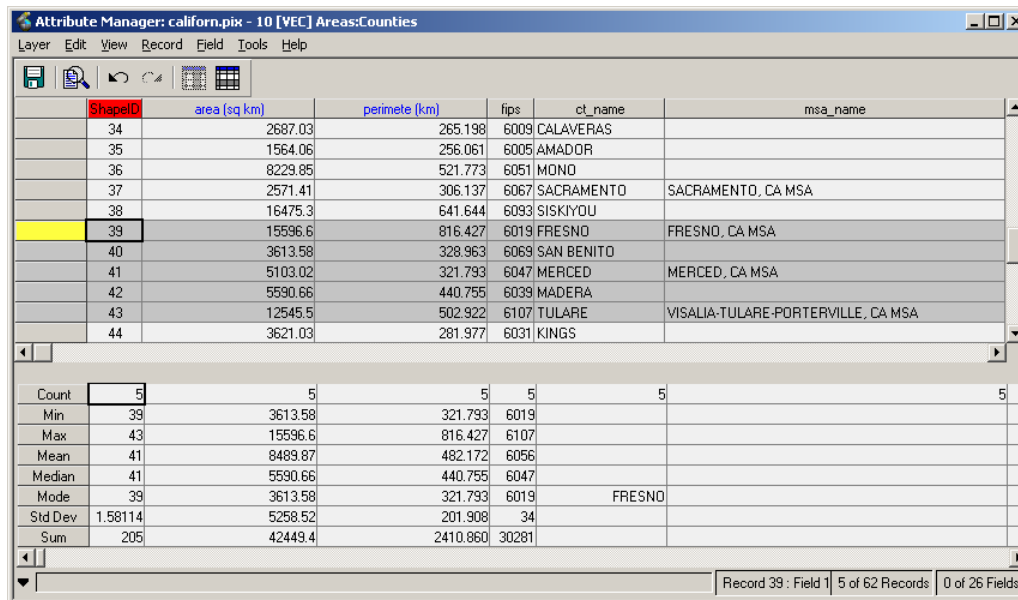
It is possible to reposition individual labels:

- click on the image layer in the Maps tab
- click on the Select tool in the Toolbar,
- click on the specific label in the map view
- move the label to the desired spot.



To use a selection of attributes as labels

1. Right-click on the layer in the Maps tab.
2. Select Attribute Manager.
3. Use the SHIFT key to select the features to be labeled. These features will be highlighted in the map view.



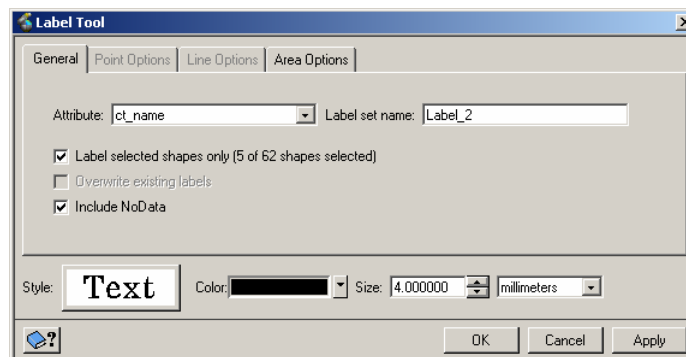
Attribute Manager: californ.pix - 10 [VEC] Areas:Counties

ShapeID	area (sq km)	perimete (km)	fips	ct_name	msa_name
34	2687.03	265.198	6009	CALAVERAS	
35	1564.06	256.061	6005	AMADOR	
36	8229.85	521.773	6051	MONO	
37	2571.41	306.137	6067	SACRAMENTO	SACRAMENTO, CA MSA
38	16475.3	641.644	6093	SISKIYOU	
39	15596.6	816.427	6019	FRESNO	FRESNO, CA MSA
40	3613.58	328.963	6069	SAN BENITO	
41	5103.02	321.793	6047	MERCED	MERCED, CA MSA
42	5590.66	440.755	6039	MADERA	
43	12545.5	502.922	6107	TULARE	VISALIA-TULARE-PORTERVILLE, CA MSA
44	3621.03	281.977	6031	KINGS	

Count	5	5	5	5	5
Min	39	3613.58	321.793	6019	
Max	43	15596.6	816.427	6107	
Mean	41	8489.87	482.172	6056	
Median	41	5590.66	440.755	6047	
Mode	39	3613.58	321.793	6019	FRESNO
Std Dev	1.58114	5258.52	201.908	34	
Sum	205	42449.4	2410.860	30281	

Record 39 : Field 1 | 5 of 62 Records | 0 of 26 Fields

4. In the Maps tab, right-click on the layer name and select Properties > Labels.
5. In the Vector Layer Properties dialog box, click on the Add New button.
6. In the Label Tool window, the *Label selected shapes only* option will be selected. Apply the necessary styles to the label and click OK.



Label Tool

General | Point Options | Line Options | Area Options

Attribute: ct_name | Label set name: Label_2

Label selected shapes only (5 of 62 shapes selected)

Overwrite existing labels

Include NoData

Style: Text | Color: [Black] | Size: 4.000000 | millimeters

OK | Cancel | Apply