

FACT SHEET

Key Features and Benefits of GeoRaster Loader

- Extract and load tool for populating Oracle 10g and 11g Spatial GeoRaster enterprise databases
- Supports loading of more than 50 Raster Formats
- Metadata mapping tool to ingest image metadata to fields in the Oracle table containing the GeoRaster data type
- User-friendly interface which offers full control over GeoRaster storage options

Geomatica GeoRaster Loader

Geomatica GeoRaster Loader is a desktop product to load image data and associated metadata into Oracle 10g. Image data is extracted from over 50 raster file formats and loaded into the Oracle 10g database as a GeoRaster object. Associated image metadata is loaded into fields in the table containing the GeoRaster.

GeoRaster Configuration

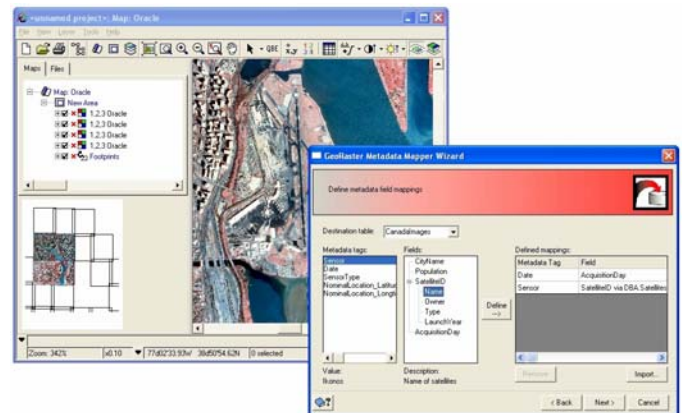
The GeoRaster ETL tools offer full control of the GeoRaster object created as part of the loading process.

- Specify settings for blocking (tiling) the GeoRaster object. The image tiling is indicated for row, column and band dimensions.
- Allow generation of reduced resolution datasets with control of how the resampling operation is to be performed.
- Calculate image statistics for storage within the GeoRaster object.
- Setting of interleaving type for images with multiple bands.
- Sets the image footprint, from either the spatial reference of the raster, or based on the raster footprint re-projected to a different spatial reference system.

Metadata Mapper

The GeoRaster Metadata Mapper is a wizard designed

to create a mapping scheme for transferring metadata from rasters to fields in a GeoRaster table. You can use the GeoRaster Metadata Mapper to transfer or update a raster, its metadata, and other values in the GeoRaster table.



Mapping metadata to the Oracle GeoRaster table, and viewing results

Metadata Quality Control

The GeoRaster metadata mapping feature supports enduser data models to assist in quality control of ingested image metadata. The fields in the destination GeoRaster table can reference secondary tables which store valid metadata values. Any invalid metadata values will be flagged during the ingest process.

Supported file formats

GeoRaster ETL utilizes the PCI Generic Data Base (GDB) technology for directly reading raster, information from an extensive list of supported file formats. This offers the advantage of quick and direct access to data while eliminating the need to reproduce files since no conversion is necessary.

**A comparison of the Geomatica GeoRaster Loader
and Geomatica ETL products:**

Feature	GeoRaster Loader	Geomatica ETL
Number raster formats supported	> 50	> 50
Number vector formats supported	0	> 50
Metadata support	Yes	Yes
Licensing	Free MAC address license (registration required)	Hardware dongle
Floating license	No	Yes
Batch processing	No	Yes
Processing Applications	MetaData Mapper	MetaData Mapper, EASI, Modeler
Image size restrictions	None	None
Translation functions	None	> 50
Image Viewer	Yes (Freeview)	Freeview/Focus
Supported platforms	Windows	Windows, LINUX, Solaris

Distributed by:



PCI Geomatics Headquarters
50 West Wilmot Street
Richmond Hill, Ontario
CANADA L4B 1M5

Phone: 905 764-0614
Fax: 905 764-9604
Email: info@pcigeomatics.com
Web: www.pcigeomatics.com

Updated: 1/31/2008

The information in this document is subject to change without notice and should not be construed as a commitment by PCI Geomatics. PCI Geomatics assumes no responsibility for any errors that may appear in this document. Copyright © 2004 PCI Geomatics inc. All rights reserved.