

## FACT SHEET

Today, intelligent decision making requires multidisciplinary analysis. With PCI Geomatics, geospatial professionals gain knowledge through the merger of remote sensing, GIS, spatial analysis, and cartography – all from one location. Efficiency and productivity is gained as less time is spent transferring between different data formats and processing software, leaving more time for the all-important interpretation of results.

Geomatica® is your all-in-one answer when it comes to developing image-centric GIS and mapping solutions. View and integrate raster imagery with GIS vector data; build, edit, and query attributes, or perform interactive spatial analysis operations from one easy-to-use interface.

## Geomatica Hyperspectral Analysis Key Features

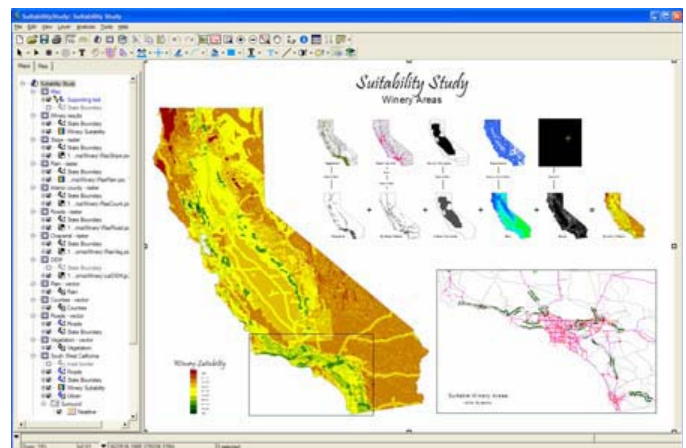
- Support for more than 100 geospatial data formats
- Complete raster and vector integration
- Spatial analysis, including interactive buffer and dissolve operations
- Advanced overlay operations
- Flexible mapping tools
- Statistics, graphs, reports, and cartographic maps

## GIS in Geomatica

Geomatica contains a wide range of powerful tools for performing GIS functions. With Geomatica, you can assemble, overlay, identify, derive, extract, store, manipulate, import, export, and display all types of geospatial data.

The core GIS functionality of Geomatica includes:

- Full topological vector support
- Advanced vector editing functionality
- Build, edit, and query data attributes
- Data conversion tools
- Reprojection



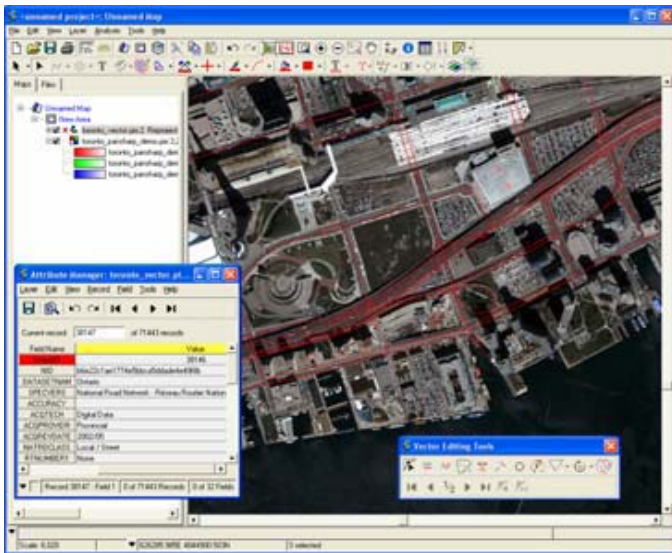
Spatial Analysis in Geomatica

## Spatial Analysis in Geomatica

Whether you are determining the suitability of various areas for a specific need or trying to predict future events, such as urban expansion or crop yields, using multiple data sources is often essential. Built on a robust legacy, the Geomatica spatial analysis tools let you visualize, analyze, and model geographic information, allowing you to discover problem-solving spatial relationships, trends, and patterns.

Spatial Analysis in Geomatica includes:

- Fully integrated raster and vector analysis
- Interactive, intuitive spatial analysis tools
- Multi-layer buffer creation
- Combine (dissolve) data based on attributes
- Advanced overlay wizard for spatial, statistical, and suitability analysis



Vector Shape and Attribute Management in Focus

- A complete suite of cartographic surround tools, borders, grids, scale bars, north arrows, and many more
- Full control of raster, vector, and map surround representations
- Export maps to many popular formats, including TIFF, JPEG, and Adobe Illustrator, that can be viewed by anyone, anywhere
- Commercial printing functionality, including color separation

Best of all, mapping technology is built directly into the Geomatica work environment, allowing geographical information to be easily imported, exported, layered, edited, and extracted from geospatial data; this information can then be accurately conveyed on a digital map.

## Licensing

GIS and Mapping functionality, including Charting is available in Geomatica Core.

Raster Spatial Analysis functionality, including buffering and overlay analysis is available as part of Geomatica Prime.

## Charting

Create column, bar, line, area, pie, and scatter charts in Geomatica to help with analysis and presentation of data. The advanced charting tool features:

- Intuitive Chart Definition Panel allows users to quickly choose and adjust the data to display, and how to display them
- 'On-the-fly' update of charts based on selected data
- Zooming capability enables close inspection of charts
- Easy definition of titles, colors, background styles, legends, grid types and labels

Charts may be exported to file for inclusion in maps, reports and presentations. The following formats are supported for chart export: Adobe Illustrator, JPEG, PCIDSK, TIFF, BMP, JPEG 2000, and EMF.

## Mapping in Geomatica

Accurate and professional maps can relay a fantastic volume of information. Geomatica contains a wealth of mapping tools and features to assist in the production of high-quality, accurate maps. Mapping functionality includes:

### Distributed by:



**PCI Geomatics Headquarters**  
 50 West Wilmot Street  
 Richmond Hill, Ontario  
 CANADA L4B 1M5

**Phone:** 905 764-0614  
**Fax:** 905 764-9604  
**Email:** info@pcigeomatics.com  
**Web:** www.pcigeomatics.com