

FACT SHEET

Start seeing your data's potential with PCI Geomatics. Although Optical remote sensing imagery has been used for several years and techniques of image classification, rectification and so on are well established, the image processing methods developed for optical data have become increasingly difficult to implement - until now. Drawing on the spectacular power of our Optical Image Analysis module, your optical processing possibilities are made endless.

PCI Geomatics' Optical package provides a variety of tools for processing and adding value to your optical imagery, including AVHRR orbital navigation, advanced classification techniques and atmospheric correction (ATCOR2).

Geomatica® Oracle Optical Image Analysis Features

- AVHRR Geometric and Radiometric Correction
- AVHRR Surface Temperature and Vegetation Index Extraction
- Neural Network Classification
- Contextual/Fuzzy Classification Algorithms
- Spectral Unmixing Calculation of surface temperature
- Atmospheric Correction (ATCOR2)

AVHRR Orbital Navigation

AVHRR data can provide information for monitoring vegetation conditions in any type of environment. AVHRR data are also used to retrieve various geophysical parameters such as sea surface temperatures and energy data.

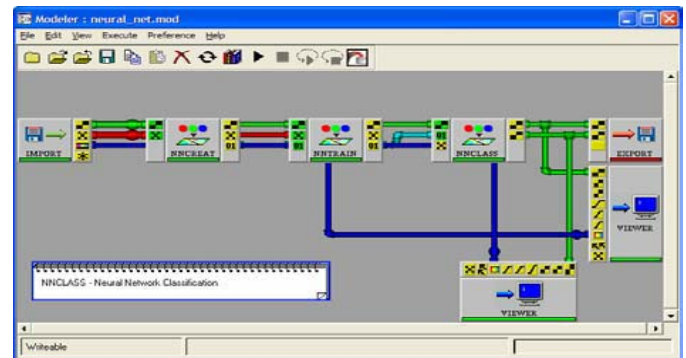
Applications include agricultural assessment, land cover mapping, production of regional image map of countries or continent, and tracking regional and continental snow cover.

Get the most from your AVHRR data with Geomatica's Optical Image Analysis package. Feature highlights include: image and metadata ingest from a wide variety of formats, geometric correction, radiometric correction, and sea surface temperature and vegetation index extraction.

Advanced Classification

Most classification methods are traditional in that they are 'per pixel' classifiers. PCI Geomatics' Advanced Optical package provides a variety of alternative classification and transformation techniques including Neural Network, texture segmentation, and contextual/fuzzy classification algorithms. Spectral unmixing – the creation of

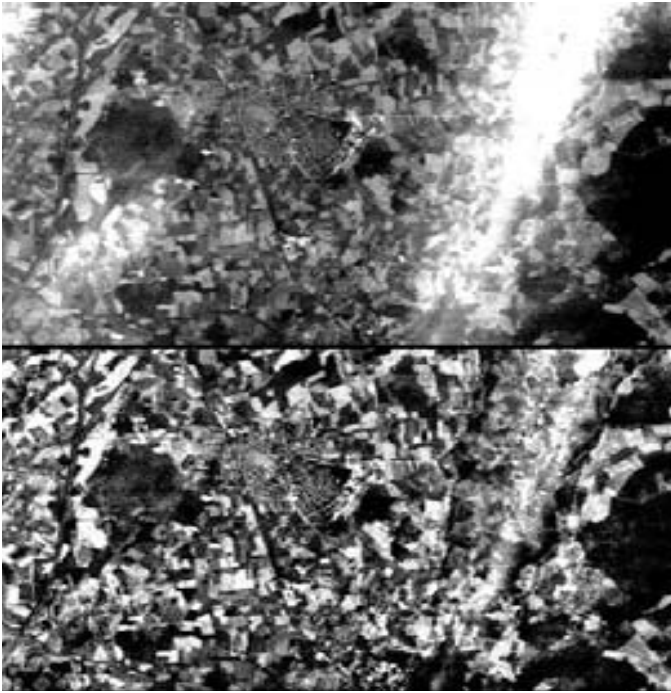
fraction images for a set of class signatures – is also included.



A Neural Network Classification Workflow

Atmospheric Correction (ATCOR2)

ATCOR2, atmospheric correction for flat terrain areas, is included with optical image analysis functionality. For more information, see PCI Geomatics' Atmospheric Correction fact sheet.



Haze Removal from Landsat Imagery

Licensing

All functionality discussed in the fact sheet is available in Geomatica Core.

Distributed by:



PCI Geomatics Headquarters
50 West Wilmot Street
Richmond Hill, Ontario
CANADA L4B 1M5

Phone: 905 764-0614
Fax: 905 764-9604
Email: info@pcigeomatics.com
Web: www.pcigeomatics.com

Updated: 2/20/2009

The information in this document is subject to change without notice and should not be construed as a commitment by PCI Geomatics. PCI Geomatics assumes no responsibility for any errors that may appear in this document. Copyright © 2009 PCI Geomatics inc. All rights reserved.