

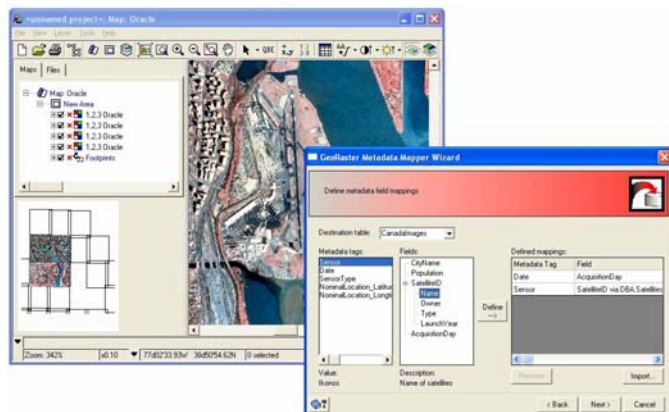
## FACT SHEET

### Key Features and Benefits of GeoRaster ETL for Oracle

- Fully integrated support for Oracle 10g and Oracle 11g
- Flexible extract, transform and load (ETL) tool supporting over 50 different file formats
- Complete solution for GeoRaster image loading
- Powerful GUI workflow builder to perform various image transformations prior to loading
- Multi-session enabling access to multiple servers in a distributed environment
- Offers both interactive and scripting tools to load single images or to batch process a series of images
- Metadata mapping tool to ingest image metadata to fields in the Oracle table containing the GeoRaster data type

### GeoRaster ETL for Oracle: A complete solution for Oracle GeoRaster loading

GeoRaster ETL is a powerful Extract, Transform and Load tool for Oracle GeoRaster. The product supports a wide range of image types and file formats, a scripting environment for customized or command line loading, a visual workflow builder to build process flows which incorporate transformations in the loading process, and a metadata mapping wizard to build associations between raster metadata and fields in the Oracle destination table.



Mapping metadata to the Oracle GeoRaster table, and viewing results

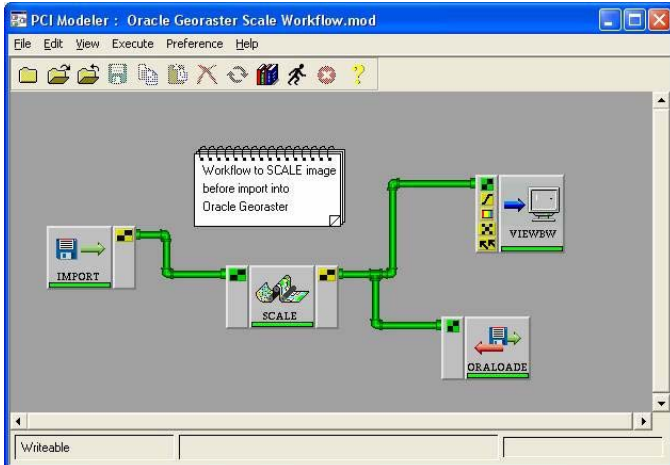
### GeoRaster Configuration

The GeoRaster ETL tools offer full control of the GeoRaster object created as part of the loading process.

- Specify settings for blocking (tiling) the GeoRaster object. The image tiling is indicated for row, column and band dimensions.
- Allow generation of reduced resolution datasets with control of how the resampling operation is to be performed.
- Calculate image statistics for storage within the GeoRaster object.
- Setting of interleaving type for images with multiple bands.
- Sets the image footprint, from either the spatial reference of the raster, or based on the raster footprint re-projected to a different spatial reference system.

## Modeler and Transformations

With Modeler you can easily create a process to transform and transfer numerous rasters into the Oracle Spatial database. The visual environment provides you with an intuitive method to construct complex processes interactively.



Modeler – a GUI workflow-builder for scripting pre-load transformations

## EASI Scripting Environment

EASI is a programming language with a command-line interface that can be used to create customized scripts to transform and transfer numerous rasters into the Oracle Spatial database.

## Metadata Mapper

The GeoRaster Metadata Mapper is a wizard designed to create a mapping scheme for transferring metadata from rasters to fields in a GeoRaster table. This file can be used with EASI or Modeler to transfer rasters in a batch process. You can also use the GeoRaster Metadata Mapper to transfer or update one raster, its metadata, and other values in the GeoRaster table.

## Metadata Quality Control

The GeoRaster metadata mapping feature supports enduser data models to assist in quality control of ingested image metadata. The fields in the destination GeoRaster table can reference secondary tables which store valid metadata

values. Any invalid metadata values will be flagged during the ingest process.

## Supported file formats

GeoRaster ETL utilizes the PCI Generic Data Base (GDB) technology for directly reading raster, vector and other information from an extensive list of supported file formats. This offers the advantage of quick and direct access to data while eliminating the need to reproduce files since no conversion is necessary.

Highlights of the 50+ supported raster and vector formats are:

ABG	Arc/Info Grid (Binary)
BIL	Arc/Info BIL
BIP	Arc/Info BIP
BMP	OS/2 or Windows Bitmap
COT	Intergraph Raster
DEM	USGS DEM (Optional)
DGN	MicroStation Design
DTD	DMA DTED (CD-ROM)
DXF	Autocad DXF 14
E00	Arc/Info Import/Export
ECW	ER Mapper Compressed Raster
ERD	ERDAS
ERS	ER Mapper Raster
GML	OGC GML
GRD	Arc/Info Grid (ASCII)
HD4	NCSA HDF Version 4
HDF	NCSA Hierarchical Data Format
HDR	GTOPO30
HEG	HDF EOS Grid (.hdf)
HES	HDF EOS Swath (.hdf)
HGT	Shuttle Radar Topography Mission (SRTM)
IMG	Erdas Imagine Image
JP2	JPEG 2000
JPG	JPEG JFIF
MDB	Microsoft Access
MIF	MapInfo Data Interchange Format
NITF	National Imagery Transmission Format
NTF	NTF 2.0
NVI	ENVI Image Format (.hdr)
ODBC	ODBC
OGD	OGDI Data Server
PIX	PCIDSK
RAW	Raw Image (user described)
RGB	Intergraph Raster
SHP	ArcView Shapefile
SID	MrSID Raster
TIF	TIFF 6.0

## Distributed by:



**PCI Geomatics Headquarters**  
50 West Wilmot Street  
Richmond Hill, Ontario  
CANADA L4B 1M5

**Phone:** 905 764-0614  
**Fax:** 905 764-9604  
**Email:** info@pcigeomatics.com  
**Web:** www.pcigeomatics.com