

Geomatica 10.3

Now includes imaging tools for GIS!

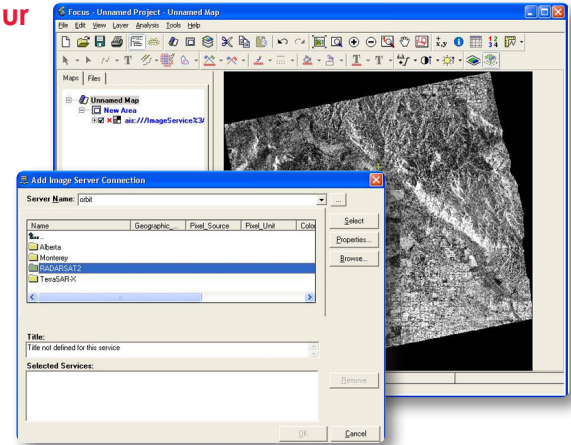


Are you frustrated using multiple or incompatible tools for all your remote sensing and image processing needs?

You have the data, but you don't have the tools?

No longer do you need to use multiple or incompatible tools. Geomatica offers a single, integrated software system that will meet all your remote sensing and image processing needs —turning your imagery into answers. What does this mean for you? Fewer errors, less wasted time, and greater productivity.

Geomatica 10.3 is the latest release of this integrated environment and now includes imaging tools for GIS.



Support for ESRI® ArcGIS® Server Image Extension

The ArcGIS Image Server Extension is supported in version 10.3 of Geomatica OrthoEngine, allowing for the integration of ArcGIS Image Server data into processing.

Geomatica/ArcGIS Server interoperability

In Geomatica Focus, data can be loaded from an ArcGIS Image Server as a read-only layer. In OrthoEngine, data can be loaded from the ArcGIS Image Server and the imagery used to collect ground control or reference elevations in the orthorectification process.

50+ sensors now supported through RPDef export

- Ikonos
- GeoEye-1
- Quickbird
- RADARSAT-2
- ALOS PALSAR
- TerraSAR-X
- Cosmo-SkyMed
- ASTER
- Landsat 1-7
- WorldView-1
- Cartosat-1
- RapidEye
- SPOT 1-5
- ASAR

ArcGIS Server Image Extension support

Efficient and accurate orthorectification is now available to GIS users through OrthoEngine. From OrthoEngine, users can export imagery and project information to the ESRI RPDef (Raster Process Definition) format.

This workflow will leverage OrthoEngine's long list of supported sensors and allow for their use within ESRI software.

Generic Database (GDB) updates

Geomatica supports raw ALOS K&C mosaic data as well as PNG (Portable Network Graphics) formats.

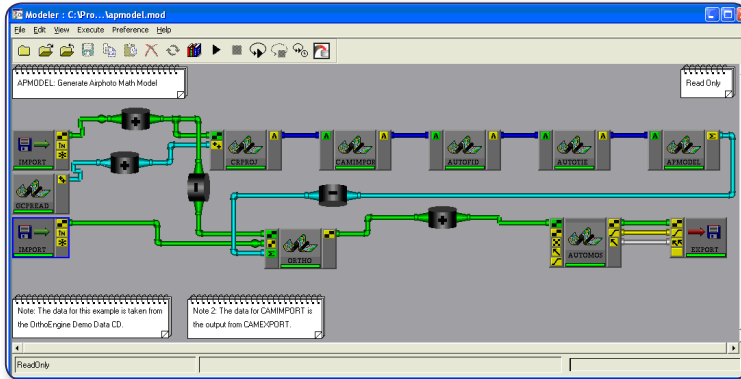
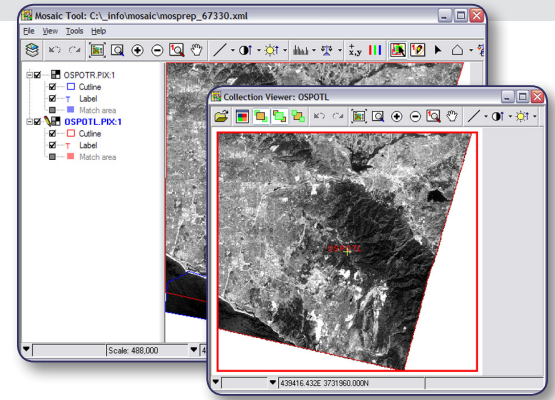
Get Data function

Do you need new data for your study and are not sure where to look?

The "GetData" function, available through the File menu in Geomatica Focus, allows users to easily access and download data from a number of data providers. When the Get Data tool is selected, a web page appears, listing a number of different providers.

Improved manual mosaicking

The manual mosaicking tool in OrthoEngine has been completely redesigned. The new interface enables users to load all un-mosaicked data into a single window, from which changes in color balancing and cutline generation can be seen in real time.



Geomatica Modeler Air Photo orthorectification improvements

A number of algorithms have been added to the Algorithm Librarian in Geomatica Modeler. These algorithms allow users to create full AirPhoto orthorectification workflows. Geomatica supports standard frame cameras including UltraCam, DMC, and more.

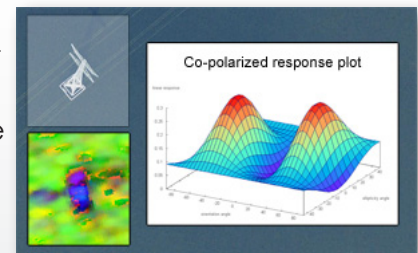
Advanced SAR analysis

Geomatica offers the most extensive suite of tools for advanced SAR analysis, with support for the most current satellite platforms.

SAR data provides all-weather, day/night information, critical for monitoring applications. Polarimetric SAR (PolSAR) provides four channels of information (HH, VV, HV, VH), collected simultaneously, a rich source of information.

What can you do with SAR?

PolSAR data can be used to perform target analysis. Polarimetric decomposition can be used to discriminate vegetation types, agricultural crops, ocean features, man-made objects, and more.



Supported data types include PALSAR, TerraSAR-X, RADARSAT-2, COSMO-SkyMed, in addition to others.

Industry leader in sensor support

Our list of supported sensors continues to grow with each Geomatica release:

- ALOS
- ASAR
- ASTER
- Cartosat-1
- CBERS 1
- CBERS 2
- COSMO-SkyMed
- DMC (Disaster Monitoring Constellation)
- EROS A
- EROS B
- Formosat-2
- GeoEye-1
- Ikonos
- Kompsat-2
- Landsat
- MERIS
- QuickBird
- Radarsat-1
- Radarsat-2
- RapidEye
- Spot 1-5
- TerraSAR-X
- WorldView-1



50 West Wilmot Street
Richmond Hill, Ontario
CANADA L4B 1M5

Phone: 905 764-0614
Fax: 905 764-9604
Email: info@pcigeomatics.com
Web: www.pcigeomatics.com