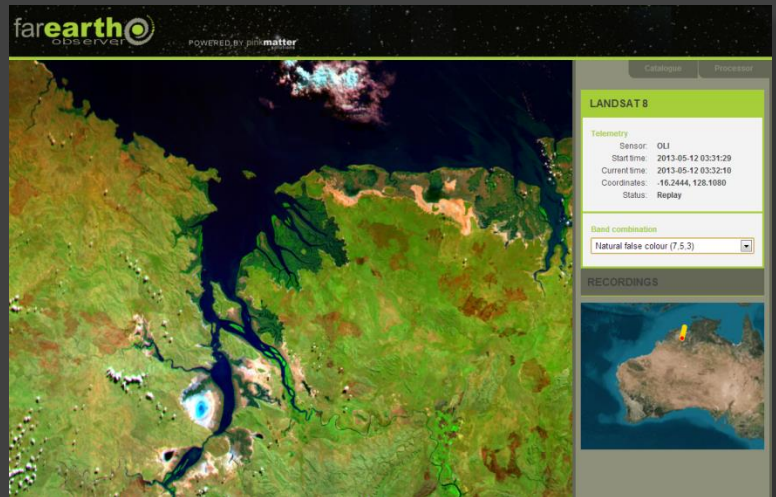


Pinkmatter Solutions is a South Africa based software development company that focuses on products for the remote sensing industry. South African company Forest Sense is a strategic partner that brings valuable scientific expertise to the group. Forest Sense has a strong background in remote sensing science and the development of quantitative remote sensing processing chains using technology from PCI Geomatics. Together we have a number of offerings for the remote sensing industry.

Landsat Terminal

A product that is mainly of interest to ground receiving stations, the Landsat Terminal performs tasks like data acquisition, processing, archiving and cataloguing for NASA's range of Landsat satellites.

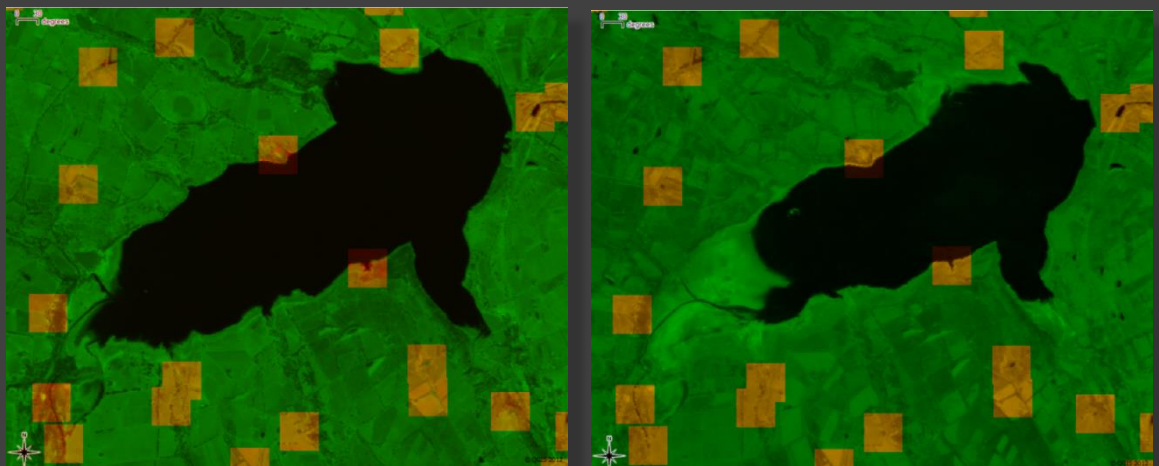
Processing starts at raw data as received from a demodulator or tape archive and continues up to an orthorectified and pan-sharpened level.



Landsat 8 Moving Window during a satellite pass over Northern Australia

Custom processing chains and solutions

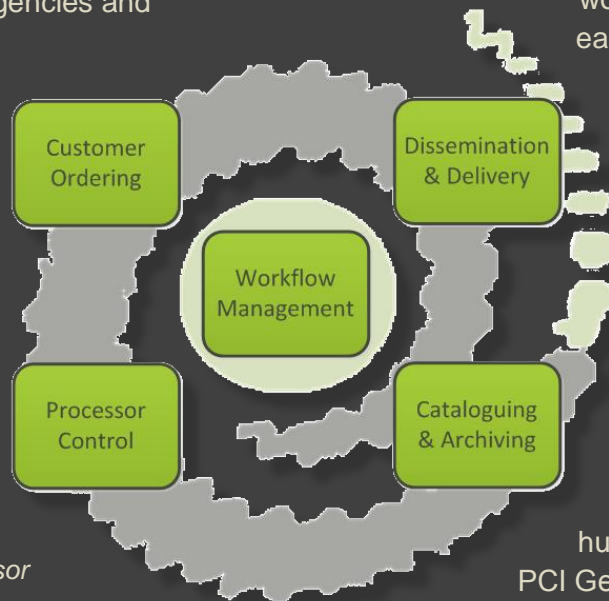
Besides our products for the remote sensing industry, Forest Sense and Pinkmatter provide custom solutions to space agencies and satellite data providers. These range from custom PCI processing chains and sensor models for optical sensors and SAR interferometry to customized processing solutions for high-performance computing environments.



Co-registration of two satellite images of the same area taken at different times

earth observation • automation • workflows • archive • catalogue

The FarEarth software suite is aimed at receiving stations, surveyors, mapping agencies and organizations that process and archive remote sensing data. The FarEarth Processing and Automation System provides end-to-end automation of such an organization's production workflows – from online customer order to final online or offline delivery.



The system manages the complexity of workflow steps and makes it easier to develop automated production chains. It can control a variety of processors from low-level raw processing to systems producing high-level information products. Connectors for automating PCI's powerful Geomatica toolkit exist and the system also allows for human workflow steps using PCI Geomatica's user interfaces.

FarEarth Director showing processor and archive status along with progress and data transfers (below)



Workflows are automatically started based on customer orders placed in an online catalogue. Flexible workflow rules allow for the automatic (or partially manual) production of imagery. The web-based catalogue allows for direct delivery and dissemination of completed production orders.



FarEarth Catalogue (right)

FarEarth Order Manager (above)